

**MUNICIPAL DISTRICT OF TABER**

**MD CONNECTION**

*Reeve's REFLECTIONS* .....  
**Tax burden looms in absence of oil and gas recovery**

**A**s this is the first newsletter to be printed since the provincial election I'd like to extend congratulations to Premier Jason Kenney, MLA Grant Hunter of the Taber / Warner constituency and MLA Joseph Schow of the Cardston-Siksika constituency on their election victories. As well congratulations to Mr. Hunter on being named the Associate Minister of Red Tape Reduction.

The M.D. of Taber is highly dependent upon non-residential property taxes to fund municipal operations - near 70% of the M.D. of Taber budget is related to this property class, which includes industrial and commercial operations including industrial plants, well sites, gravel pit operations, electrical generation and transmission, telecommunication equipment and railway. The largest component of the non-residential property class includes linear and machinery and equipment related to oil and gas wells, gas and oilfield installations.

The Rural Municipalities of Alberta (RMA) have recently conducted a survey that identifies that an unprecedented \$81 million in property taxes from oil and gas companies have gone unpaid. This is a unique challenge that has not been experienced by municipalities in Alberta before. When oil and gas companies fail to pay property taxes, the burden falls on the rest of the tax base to cover the difference to ensure that core services and infrastructure can continue to be provided. Often when property taxes go unpaid so do surface lease rentals and more importantly business activities within communities.

The Province of Alberta has initiated a measure of tax relief for



**MERRILL HARRIS, REEVE**

shallow well gas producers by reducing the education property tax portion of property taxes. It is expected that this measure will provide \$23 million in support to the industry.

It is hoped that the new government will address the sustainability of Alberta's oil and gas industry. It is evident to every Albertan that over the past 5 years the industry has been under attack by both the federal and provincial governments. The inability to construct a single pipeline to tidewater has proven to be a detriment to our economy. Loss of large linear property tax payers may result in a significant tax shift to other property tax classes if the oil and gas industry does not recover.

**Drainage**

The work on drainage projects continues with significant progress once again being made by the M.D. of Taber projects crew on installation

of new culverts, replacement culverts or culverts damaged by last years flooding. Work will continue on this important work this year and into the future.

The M.D. of Taber is close to tendering out the West Township 8 Range 16 project in the coming months - this project has been ongoing since 2012. The M.D. of Taber was able to secure \$2.3 million in funding for the project under the Alberta Community Resiliency Program. The M.D. of Taber extends its thanks to the TID and SMRID and the landowners for their collaboration on this important project.

■ Continued on Page 2



**MUNICIPAL DISTRICT OF TABER**

**ADMINISTRATION OFFICE**

**4900B-50th Street**

**Taber, Alberta, T1G 1T2**

**Phone: 403-223-3541**

**We're On the Web:**  
[www.mdtaber.ab.ca](http://www.mdtaber.ab.ca)

**Council Members**

**MERRILL HARRIS (Reeve)**  
 Division 1 ..... **403-634-0462**

**JOHN TURCATO**  
 Division 2 ..... **403-634-1591**

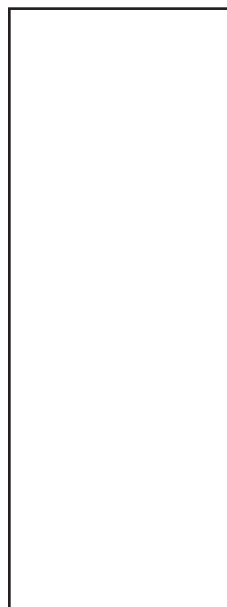
**BRIAN BREWIN**  
 Division 3 ..... **403-655-2463**

**TAMARA MIYANAGA (Deputy Reeve)**  
 Division 4 ..... **403-308-6538**

**JENNIFER CROWSON**  
 Division 5 ..... **403-308-8610**

**MURRAY REYNOLDS**  
 Division 6 ..... **403-635-8449**

**LEAVITT HOWG**  
 Division 7 ..... **403-622-1408**



**RenuWell**

**HAVE YOU HEARD ABOUT OUR PILOT TO DEAL WITH OIL & GAS WELLS BY PUTTING-UP SMALL-SCALE SOLAR INSTALLATIONS?**

**HAVE A QUESTIONS?**

**HELP US & ENTER TO WIN**

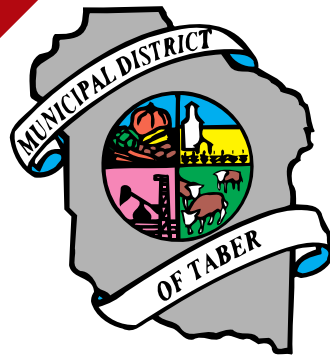
**BY COMPLETING THIS SHORT SURVEY!**

<http://bit.ly/RenuWellPublicSurvey>

**WE'D LIKE TO HEAR FROM YOU!**

## NEWS RELEASE

### Municipal District of Taber



The Council of the Municipal District of Taber has reluctantly accepted the resignation of Mr. Derrick Krizsan – Municipal Administrator effective August 23, 2019.

Derrick started his career with the M.D. of Taber as the Agricultural Fieldman in September 2000 and was appointed the Municipal Administrator in September 2006.

During his tenure as the Municipal Administrator Derrick implemented Council policy and directed the efforts of municipal staff towards completing many municipal initiatives and projects.

The most notable of these projects includes the 18-year effort to repatriate 60,000 acres of tax recovery land back to the M.D. of Taber. Regional efforts include the establishment of two regional water service commissions, which provide water to near 10,000 citizens in 4 municipalities. The growth of residential, commercial and industrial activity in municipal hamlets accelerated under his leadership. The construction of needed municipal infrastructure including roads, bridges, airport enhancements, municipal buildings and recreation facilities were also developed under his administrative leadership. Community safety was addressed with the establishment of the M.D. of Taber Regional Fire Service and the Community Peace Officer program as he successfully implemented Council policy and direction.

We extend our thanks and appreciation to him for his near 20 years of service and recognize his commitment to always faithfully, diligently, honestly and honorably fulfilling his responsibilities and duties as the Municipal Administrator.

In his letter of resignation, Krizsan stated: "I want to extend my heartfelt gratitude to the staff of the Municipal District of Taber for their dedication and the demonstrated professionalism that they bring to work each and every day. It has been a unique experience to serve as the Municipal Administrator in the community in which I grew up in – I thank the Citizens and the Council of the M.D. of Taber for having had this opportunity".

The M.D. of Taber congratulates him as he begins the next chapter in his career on September 1 when he assumes the role of Chief Administrative Officer of the Municipal District of Willow Creek.

The Council has initiated their search for a new Municipal Administrator.

*Thank you!*

It has been my honor and privilege to have been employed by the Municipal District of Taber and to have served the citizens and community of this region for 19 years – first as the Agricultural Fieldman and then as the Municipal Administrator.

Being raised in the area and being able to serve in this capacity was a very unique opportunity. I sincerely hope that my passion for the citizens and the communities was demonstrated through my service.

I begin the newest chapter in my career September 1 when I assume the role of Chief Administrative Officer at the Municipal District of Willow Creek.

I was fortunate to have worked with the incredible, talented and dedicated staff of the Municipal District of Taber.

I thank the citizens of the Municipal District of Taber for having had this opportunity. The Municipal District of Taber is an area unique to not only Alberta – but of Canada. The soil, water, heat and ingenuity present in our region allows virtually anything to be grown here – and as time as proven our future is only bound by the imagination and dreams of those who live here. Never stop thinking big.

I wish each of you the very best that life has to offer.

*Sincerely,  
Derrick Krizsan*

## Water flows for value-added agricultural plant

■ Continued from Page 1

### Economic Development

It was a great day back on June 10 at the grand opening of the Prairie Gold Product Ltd. water supply project in Vauxhall. This company produces 10 million pounds of product from potatoes grown in our region. 60 jobs depend on this plant and keeping it operational by enabling it to meet United States food safety standards is a huge economic win! Thank you to the Town of Vauxhall, the BRID and the Vauxhall Water Services Commission for making it happen.

Much work is being done towards attracting plant protein processors to our region including attendance at economic development forums, working collaboratively with regional partners and actively seeking investment opportunities in this growing industry.

### Community Safety

At the June 25 meeting of Council a resolution was passed expressing support for the M.D. of Taber

Community Peace Officer program. The Peace Officer program enhances community safety through increased visibility, taking lower priority calls leaving RCMP to deal with criminal activities provide enforcement including speeding, weights and dimensions and bylaw enforcement including irrigation of roads which protects municipal infrastructure. The two level 1 Peace Officers provide a valuable service to the community and are meeting the goals outlined in their annual operational plan.

### Infrastructure

The dry weather does have some benefit – our 2019 roadwork program is ahead of schedule. The M.D. of Taber was pleased to receive two Strategic Transportation Grants – one for a mile of road SE of Enchant and the second to rebuild an aging bridge. Additionally the M.D. of Taber and Alberta Transportation have entered into an agreement to collaborate on the construction of a off highway truck

park along Highway 36 at Vauxhall. The \$2 million dollar project is funded 75/25. A tender for the project will be issued in the coming month or so.

The M.D. of Taber is certainly a busy place with lots of projects and activities underway. We have many challenges however we have great staff who always rise up to meet them all.

Speaking of staff I would like to extend my thanks and appreciation to Derrick Krizsan – Municipal Administrator – who will be leaving the M.D. of Taber on August 23 for another opportunity. We thank Derrick for his contributions to the municipality and region and wish him well in his future endeavors.

I wish you a successful summer season.

*Sincerely,  
Merrill Harris  
Reeve  
Municipal District of Taber*



## M.D. of Taber Recreation Master Plan Survey

### Response Deadline Extended to July 26, 2019

Dear M.D. of Taber Resident:

The M.D. of Taber is conducting a Community Survey to help Council make decisions about future public recreation, culture, and parks initiatives. The deadline to respond to the survey has been extended to July 26, 2019.

A survey package was mailed to your household in early June for the survey. If you still have the package, we encourage you to complete the questionnaire and send it to us in the postage-paid self addressed envelope.

If you haven't received the package or misplaced it, you can still participate. You can go to [www.yourviews.ca/mdtaber.htm](http://www.yourviews.ca/mdtaber.htm) and complete the questionnaire online.

The community response to the survey has been great. The number of responses that have come in from residents is similar to what we experience in other communities. However, quite a few responses have come in close to or after the survey deadline. So, we are extending the response deadline to make sure everyone has ample opportunity to participate in the survey.

Your participation in the survey is important. The M.D. of Taber supports many public recreation facilities, programs, and services and operates parks throughout the community. The higher the response is to the survey, the better the decisions will be about M.D. priorities for public recreation over the next five to ten years.

HarGroup Management Consultants, an independent research firm, has been engaged to conduct the survey. Should you have any questions about this survey, or require assistance to complete this questionnaire, please call HarGroup Management Consultants, at 1-877-431-5002 (toll free), Monday to Friday, 9:00 am to 5:00 pm. You can also contact HarGroup by e-mail at [mdtrecreation@hargroup.ca](mailto:mdtrecreation@hargroup.ca).

We thank you in advance for participating in this very important survey. We look forward to hearing from you!

Sincerely,

**HarGroup Management Consultants**

Jon Hartenberger, M.B.A., C.M.R.P., C.M.C.  
Principal

### How to Participate:

- If you have received the survey package in the mail, you can complete the questionnaire and return it in the postage paid self-addressed envelope.
- You can also go to the following website and complete the questionnaire online:

[www.yourviews.ca/mdtaber.htm](http://www.yourviews.ca/mdtaber.htm)

Your Access Code is:

**NNNNNN**

### Reasons to Participate:

- **Your opinion counts.** You have a stake in your community. Council will be making decisions about how tax dollars are spent based on the survey results.
- **All residents benefit from the survey.** Whether it is children being able to participate in sports or culture activities, seniors having facilities for social functions, or adults having access to fitness services, the M.D. needs to know what is important to residents.
- **You have a chance to win a \$100 gift card.** The M.D. of Taber is pleased to offer a prize draw for participants to win one of three \$100 gift cards for responding to the survey.

# Off Highway Vehicle Bylaw

The Council is considering adopting an "Off Highway Vehicle Bylaw" that will allow the use of Off Highway Vehicles on roads operated by the M.D. of Taber. The 3rd reading of the bylaw is planned for the August 13 council meeting.

**Your feedback on this bylaw is requested prior to August 7th. Please send us your comments to the following email address:**

**[ohvbylaw@mdtaber.ab.ca](mailto:ohvbylaw@mdtaber.ab.ca)**

The Alberta Traffic Safety Act allows municipalities by bylaw to permit the use of Off Highway Vehicles on roads controlled by the municipality provided a Bylaw allowing OHV's to operate on the roads has adopted the use of OHV's on roads.

M.D. of Taber Bylaw No. 1950 allows the following:

- OHVs are allowed on municipal roads for 'Legitimate Business Purposes' which include agricultural uses. Recreational riding on roads will remain prohibited.
- All OHV's must be registered, insured and display a valid license plate.
- All OHV's must be equipped with headlamps, tail lamps, an exhaust muffler, and any other equipment as required by the Off-Highway Vehicle Regulation.
- The operator and passenger, if any, must wear helmets.
- This bylaw does not authorize the operation of Off-Highway vehicles on any M.D. of Taber property except a road.
- The maximum speed limit while riding on a road is 50 km/hr
- OHVs must travel on the right hand side of the road with traffic.
- The OHV operator must be at least 14 years old while driving on M.D. roads.
- OHVs are prohibited on environmental reserves, school property and any land marked with signage.
- This bylaw does not include provincial highways or ditches along provincial highways – this remains prohibited by law.
- Operation of OHV's are prohibited within the Hamlet of Grassy Lake, Hamlet of Hays, Hamlet of Enchant, Johnson's Addition, all residential subdivisions (Grouped Country Residential) and municipal parks and recreation areas.
- The Bylaw includes penalties and fines for non-compliance to the guidelines of the bylaw.



**Taber  
Pheasant  
Festival  
2019**

# HUNTERS!

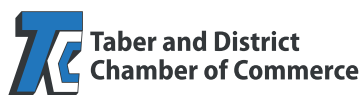
Novice Hunters  
October 19 & 20, 2019

**Registration is now open for the Novice Shoot. This popular event has limited space and fills up quickly.**

Are you thinking about trying pheasant hunting? Novice shoots run separately from the regular hunts. Instructors and volunteers from Alberta Hunter Education Instructors' Association and Alberta Conservation Association offer proper firearm handling, clay target shooting instruction, and one-on-one mentoring to ensure a safe, hands-on learning opportunity.

Although firearms are provided, every participant must have a valid game bird licence and pheasant licence. Note that registration to this event is limited, so that every participant can get the most out of the learning experience.

**For more information, please visit [taberpheasantfestival.com](http://taberpheasantfestival.com)**



## 2019 Municipal Property Assessment – Summer Newsletter

### 2019 PROPERTY ASSESSMENT RE-INSPECTION CYCLE, SALES VERIFICATION INSPECTIONS, AND ANNUAL INSPECTIONS

We are currently re-inspecting properties south of the Oldman River, as well as selected properties north of the Oldman River as required. Sales verification inspections will occur throughout the summer and fall, at properties having sales registered with the province prior to June 30, 2019. Annual property inspections will begin in late September, for reasons including new construction, demolitions, renovations, or changes to use of land and/or buildings.

### RESPONDING TO CALL-BACK CARDS LEFT BY AN ASSESSOR

We appreciate your assistance to ensure the information we collect about your property is as accurate as possible. Often the resident is not available when an assessor attends your property (typically arriving between 8:30am and 4:00pm, Monday to Friday). The assessor may request further information about the property and/or an improvement (most often your home), leaving a folded 'call?back' card in your primary entrance. Please respond to the person noted on the card to assist in making your assessment details as accurate as possible.

### RESPONDING TO 'REQUEST FOR INFORMATION' LETTERS

If you receive a 'Request for Information' letter (RFI) in the mail, please take the time to fill it out and return it within 60 days, as requested. The RFI is for timely gathering of property assessment information necessary to prepare the assessment, including sale verification, property re-inspection information, development or construction costs, and income/expense data for income-producing properties. If you need assistance with completing your RFI, please contact us at the Administration Office. The MD of Taber Assessment Department sincerely thanks you for completing and returning these forms.

### FAILURE TO RESPOND TO A 'REQUEST FOR INFORMATION'

Please note that *if you do not respond to a request for information (e.g. call?back card or letter)*, it may affect your right to appeal your property assessment, per Section 295 (1) & (4) of the Municipal Government Act as follows:

#### "...Duty to provide information

**295(1)** A person must provide, on request by an assessor, any information necessary for the assessor to carry out the duties and responsibilities of an assessor under Parts 9 to 12 and the regulations. ..."

"... **(4)** No person may make a complaint in the year following the assessment year under section 460 or, in the case of designated industrial property, under section 492(1) about an assessment if the person has failed to provide any information requested under subsection (1) within 60 days from the date of the request. ..."

### Notification of Access & Request for Information

Assessors will be visiting properties throughout the municipality this year to verify property information for the purpose of ensuring fair and equitable assessments. Assessors carry identification and will present it upon request. If you have questions or concerns, please contact us at the MD of Taber Administration Office.



## 2019 Alberta Provincial International Practical Shooting Confederation Championship

**O**n June 29, 30 and July 1 the Taber Shooting Foundation hosted the 2019 Alberta Provincial International Practical Shooting Confederation Championship at the M.D. of Taber Sport Shooting Complex.

The 208 participating shooters came from Alberta, British Columbia, Saskatchewan, Manitoba, Nova Scotia and the Czech Republic. Over 42,000 rounds of ammunition were fired over the 3 days by the participants – and like usual with our law abiding citizen firearms owners - there were no accidents or incidents.

Here were the results:

In Open: Matt Porth 1st, Cory Laurensen 2nd and Jason Carver was 3rd.

In Classic: Ryan Cady 1st, Jeff Orita 2nd and Tim Dowse was 3rd.

Tyler Burdek 1st, Dmitri Werbeniuk 2nd and Zdenek Nemecek (from the Czech republic) was 3rd.

In Production Optics Richard Ingram 1st, Josh Mate 2nd and Ray Steuart 3rd.

In Revolver Steve Sullivan 1st, Katrina Sweetman 2nd.

In standard JP Job was 1st, John Dzurka was 2nd and Ian Jones was 3rd.

There were many compliments about the world class shooting facility and the reputation of the M.D. of Taber Sport Shooting Complex that is operated by the Taber Shooting Foundation continues to grow.

The M.D. of Taber Sport Shooting Complex was built by the M.D. of Taber utilizing municipal forces. The M.D. of Taber com-

pleted the construction of the M.D. of Taber Shooting Complex in 2016.

The facility, which is located north of the M.D. of Taber Municipal Airport on Highway 864, boasts a 50 metre, 100 metre, 200 metre, 600 metre, a 5 bay action shooting range and an archery range.

Currently the Taber Shooting Foundation has near 600 members and the range is becoming renowned among competitive shooters as a world class facility.



## LAWN CARE TIPS

*to save water during summer months*

Dreaming of a fairway-perfect lawn this summer? Water conservation should always be our goal. Most conservation measures require little aesthetic sacrifice, although it may take time and patience.

Property owners can take a few simple steps to conserve water while still enjoying their lawns.

**1. Minimize or stop fertilizing.** Lush lawns look great, but heavily fertilized lawns use more water and are more susceptible to drought stress. Most commercial lawn fertilizers call for multiple steps, including a second application of fertilizer 6-8 weeks after the first one. Apply less fertilizer or save the fertilizing till fall. Fall is the most critical time to fertilize a lawn.

**2. Maintain lawns properly.** A good rule of thumb for mowing is never remove more than one-third of the grass at one time. Raise the height of your mower deck at least one more setting higher than what you are using now. Mowing higher, forces the grass to develop and use deeper roots.

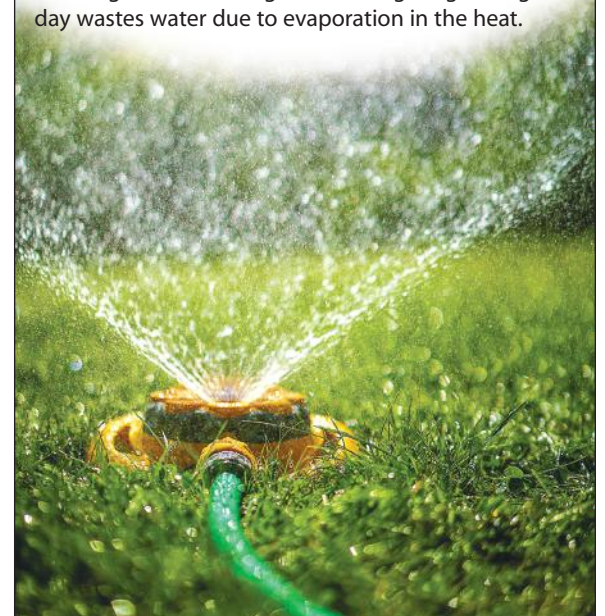
Try mulching or leaving the grass clippings on the lawn. Lawns tend to lose more water and nutrients through evaporation when clippings are removed.

If you did not aerate your lawn in spring, consider doing so in the fall. Aeration creates small holes in the ground that allow water to soak deeper in to the ground and help promote root growth.

**3. Maintain lawn care equipment.** Sharpen mower blades at least twice during the summer. Dull blades tear grass, forcing grass to use 40-60% more water to recover from stress.

Check your sprinkler system for leaky valves and heads that may be wasting water. Change the timing settings if needed. Place portable sprinklers to maximize coverage but not to water the sidewalk or roadway.

**4. Water lightly.** It is important to apply water to the depth of the roots to avoid wasting water. Taking a soil plug should give homeowners a good idea of how deep their grass roots are. Watering from early morning or late evening is ideal. Irrigating during the day wastes water due to evaporation in the heat.



## MOUNTED SHOOTING EVENT A HUGE SUCCESS



Wildrose Mounted Shooters Society had a clean shoot jackpot and cowboy challenge in the Hamlet of Hays June 22 & 23. Jim Yaroslowsky and his wife Darlene hosted the jackpot which was a huge success and sparked some local riders' interest to come out and participate. It takes a lot of time and work to get the ground and arena ready for an event and the WMSS is very appreciate to Jim and Darlene for

having the grounds ready for the event. Events don't function without volunteers, the shooters and participants appreciate the endless hours volunteers help out at these events. The shoot was so much fun that a second clean shoot jackpot/cowboy challenge has been scheduled for August 24th. The WMSS would like to thank the community of Hays and the sponsors that donated prizes for their hospitality!!!



## COMMUNITIES *in* BLOOM

### *Rural Beautification Competition*

#### Eligibility:

- Must be residents of the M.D. of Taber
- Must be actively involved in the landscape design and maintenance of the yard
- Must not be a member of Council or an employee of the M.D. of Taber

#### Competition Categories:

- Category 1 - Residents must be located on at least 39 acres
- Category 2 - Residents must be located on 38 acres or less, includes residents of hamlets of the M.D.

#### Awards:

- Awards presented in each of the seven divisions within the M.D.
- One award per category
- Residents may win only once

#### NOMINATION FORM

I nominate

Name: \_\_\_\_\_

Residence/land Location: \_\_\_\_\_

Phone number: \_\_\_\_\_ Nominated for Division # \_\_\_\_\_

Category #: \_\_\_\_\_

Nominator \_\_\_\_\_ Phone: \_\_\_\_\_

**Entries to be mailed to MARGARET BULLOCK  
4823 - 41st Street, Taber, AB T1G 1C8**

*Brought to you by: Taber Communities in Bloom Society M.D. of Taber*

## M.D. of TABER PROPERTY OWNERS PROPERTY TAX NOTICES MAILED JUNE 28, 2019

Pursuant to sections 333, 336 and 337 of the Municipal Government Act, Revised Statutes of Alberta 2000, Chapter M-26 and amendments thereto, the Municipal District of Taber hereby notifies all M.D. of Taber property owners that the Property Tax Notices for the taxation year 2019 have been prepared and mailed as of June 28, 2019.

Property taxes are due upon receipt. Taxes remaining unpaid after November 15, 2019 will be subject to all applicable penalties as outlined on the Annual Property Tax Notice.

Property owners are responsible for ensuring they have received Property Tax Notices for all properties they own. Please contact the Administration Office at 403-223-3541 if you have not received all of your 2019 Property Tax Notices.



**HORIZON SCHOOL  
DIVISION**

## EARLY LEARNING

**NOW OFFERING PROGRAMS  
FOR 3 AND 4 YEAR OLDS**

[www.horizon.ab.ca](http://www.horizon.ab.ca)

For more information call Elisha Boulay at 403-223-3547 ext. 10145

## Passing an Emergency Vehicle

Do you know how fast you're permitted to go when passing an emergency vehicle? The answer is more complicated than you might think. In October of 2005, new legislation came into effect in Alberta to address this matter.

- Emergency vehicles include fire, police, ambulance, tow trucks, and a vehicle being used by a gas disconnection unit of a public utility or designated emergency response unit.
- Motorists must slow to 60 kilometers per hour, or less if the posted speed is lower, when passing emergency vehicles or tow trucks stopped with their lights flashing. Fines for speeding in these areas will be double the regular amount.
- If there are two or more traffic lanes in the same



direction as the emergency vehicle or tow truck, passing vehicles need only slowdown in the lane immediately beside the stopped emergency vehicle. Vehicles traveling in other lanes, including oncoming lanes, may maintain their speed but should proceed with

caution.

Going just one kilometer over the speed limit could result in a \$78 - \$156 fine, and for going ten kilometers over the speed limit...\$105 - \$211.

The legislation was enacted to ensure the safety of emergency workers and motorists alike.

*Please give us room to work....our lives depend on it!*

## COMING SOON!

### South Central Alberta Rural Crime Watch



We are in the process of establishing the South Central Alberta Rural Crime Watch within the Municipal District of Taber area. The South Central Alberta Rural Crime Watch is a collaboration effort with local RCMP, Municipal Enforcement, Fish & Wildlife, additional community Crime Prevention Groups, and the **Provincial Rural Crime Watch Association** to keep the public informed on current crime prevention information and strategies. We will also provide information to community residents to assist with understanding which emergency responder or contact to call in certain situations.

Follow this link to the Alberta Provincial Rural Crime Watch Association website for information on the Alberta rural crime watch initiative: <https://www.ruralcrimewatch.ab.ca/> Watch for membership information coming soon.

## Municipal Addressing includes both Civic and Rural!

The Municipal District of Taber Addressing Program installs and maintains signage that supports our road naming conventions and rural addressing accesses.

Signage is provided by the municipality to act as a navigational tool in efficiently routing traffic throughout the municipality for many applications including but not limited to emergency services, delivery systems, utility services and mail delivery in some cases.

Our hamlets and subdivisions contain Civic Addresses that are a combination of named streets and avenues along with property numbers that must be posted by on the residence by land owners.

Similar, Rural addressing has been developed to combine the Township Range Road system with a standardized rural address for all residences and requested businesses. Each rural address is unique and contains an access number and road name. More information on rural addressing is available as an Addressing Handout on our website [www.mdtaber.ab.ca](http://www.mdtaber.ab.ca) \ Residents \ Documents & Forms. Unique to Rural Addressing is the need to post a sign at the access to a property along the municipal roadway. 12" X 24" Blue with white lettered addressing signage is provided by the municipality for this application along with the installation.

An understanding of Township Range Road Signage combined with the rural address provides a precise location of the property access along any rural road down to a 40 meter interval.

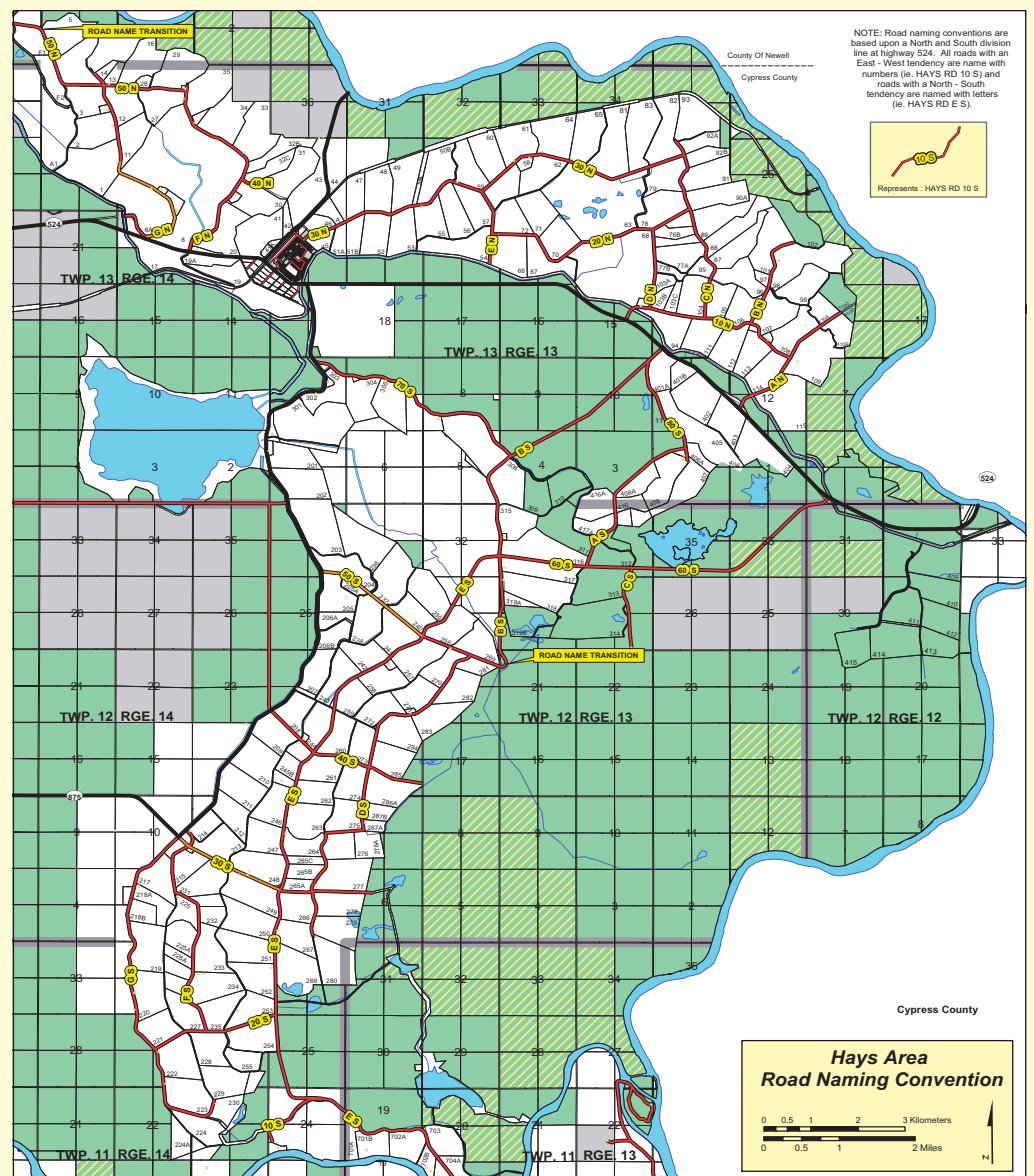
These intervals accommodate the development of future residences within the Municipal District of Taber.

### Unique Addressing Reminders!

Hays Area Addressing Reminder

\*There are NO letter O's in any Hays Addressing or Road Name Blades

\*Hays Road naming conventions are based upon a North and South division line at highway 524. All roads with an East - West tendency are named with numbers (ie. HAYS RD 10 S) and roads with a North -South tendency are named with letters (ie. HAYS RD E S)



## TABER & DISTRICT HEALTH FOUNDATION

### STEWART GENES SCHOLARSHIP APPLICATION



#### HISTORY

This scholarship started in approximately 1970 with a donation from the estate of Aud Genes, who had no family and worked in the office of Purdue Motors. He was badly crippled with arthritis, but spent many hours on the baseball field as an umpire.

Alex Stewart was married with no children. Alex ran a hardware store on main street in Taber and was acclaimed to be an astute business man. He was a very active member of the Masonic Lodge.

Two scholarships of \$500.00 each may be awarded to a graduate of Taber, Vauxhall or Grassy Lake High Schools. The scholarship is funded in partnership with Taber & District Health Foundation.

#### CRITERIA:

1. Applicant must be any past or present graduate of a Taber, Vauxhall or Grassy Lake High Schools.
  2. Applicant must be accepted to an Alberta College, Technical School, or University leading to a recognized medical, nursing, or health science degree or certificate.
  3. Applicant must be enrolled as a full time student.
  4. Applicant must not be a previous winner.
- Applicants meeting the above criteria are invited to complete this application in ink handwriting.

Name: \_\_\_\_\_

Address including Town: \_\_\_\_\_

Postal Code: \_\_\_\_\_

Mailing Address: (If different from above)

Telephone: \_\_\_\_\_

Age: \_\_\_\_\_ Name of School: \_\_\_\_\_

Date of Graduation: \_\_\_\_\_ Average Grade Achieved: \_\_\_\_\_

#### PROPOSED POST SECONDARY STUDIES

Name of School: \_\_\_\_\_

Program Enrolled In: \_\_\_\_\_

Entry date of program: \_\_\_\_\_

Career Plans in Health Care Field: \_\_\_\_\_

Why Have You Chosen This Field: \_\_\_\_\_

#### PERSONAL HISTORY

Extra Curricular Activities: \_\_\_\_\_

Volunteer Activities: \_\_\_\_\_

Hobby & Leisure: \_\_\_\_\_

Organizations Involved With/Positions Held: \_\_\_\_\_

Part-Time Employment: \_\_\_\_\_

Awards/Accomplishments: \_\_\_\_\_

Any Other Relevant Information: \_\_\_\_\_

#### DECLARATION OF APPLICANT

I authorize Taber & District Health Foundation to post my name on their web-site if my application is successful.

I declare that all information is true and complete.

I will notify Taber & District Health Foundation if I withdraw before completing at least one semester.

I authorize Taber & District Health Foundation to request and receive information pertaining to my enrollment status at my post secondary school.

SIGNATURE \_\_\_\_\_ DATE \_\_\_\_\_

Social Insurance Number (Federal Government requirement)

Successful applicants will be notified of awards to be presented in October. The Taber & District Health Foundation reserves the right to limit the amounts or numbers of scholarships awarded.

Mail Completed Applications to:  
Taber & District Health Foundation  
Stewart Genes Scholarships  
4326 50 Ave. Taber, AB. T1G 1N9

APPLICATION DEADLINE  
AUGUST 31, 2019





- Farmers' Market every Thursday evening from 5-7 at the Taber Agri-Plex
- Medicine Hat Kennel Club Dog Grooming Competition July 18-21 (All Day Event)
- Regional Horse 4-H Horse Show Aug 9-11 (All Day Event)
- Cornfest's MNP Bull-A-Rama Aug 23. Doors open at 6, Bulls at 7. I'll try and send you a copy of the poster.

**Come check out our newly renovated lobby! Book now for Christmas and staff functions, catering available on site.**



## Farm Vehicles and Agricultural Equipment on Roads

As per the *Traffic Safety Act* (and associated regulations), a vehicle used for farming operations is defined as a commercial vehicle and must abide by legislation for commercial vehicles. This means that farm vehicles over a certain height, weight and width may require a permit when transporting cargo and all cargo must be properly secured. Vehicles with farm plates are still considered to be commercial vehicles and must abide by legislation for commercial vehicles.



Alberta recognizes two classes of vehicles:

1. Private Passenger
2. Commercial Note: a vehicle used for farming operations is a Class 2 Commercial Vehicle.

Then what is considered a Commercial Vehicle?

A commercial vehicle is a vehicle operated on a highway (including county roads) by or on behalf of a person for the purpose of providing transportation. If a vehicle is used for any type of business, it's considered a commercial vehicle.

Since farming is a commercial enterprise, the commercial legislation for weights and dimensions applies. This means that farm vehicles over a certain height, weight and width may require a permit when transporting cargo.

What about Farm Plates?

If your vehicle has farm plates, it is a commercial vehicle as defined by the Traffic Safety Act.

Farm plates are used for registration purposes and to distinguish farmers from other industries when purchasing/possessing marked fuel. They do not carry with them any other value or exception related to; height, width, weights, permits or securing loads.

These are the dimensions allowed before you require a permit.

If the farm equipment/commercial vehicle and its load exceed any or all of the following dimensions, you will need a permit:

- 2.6 metres in width (8.5 feet)
- 4.15 metres in height (13.6 feet)
- 23 metres in length (75 feet)

Securing Loads? Do you mean Cargo Securement?

All commercial vehicles must have properly secured cargo. Even if a vehicle has farm plates, the load must still be secured during transport to ensure it won't leak, spill, blow off, fall from, fall through or otherwise be dislodged from the commercial vehicle. This includes securing items that may shift within the vehicle to the extent that the commercial vehicle's stability is adversely affected. If the load is not properly secured, the driver may face a steep fine and be civilly responsible for any damages, injuries or deaths resulting from insecure loads.

Permits

For more information or to obtain a permit for a provincial road, please call the Alberta Transportation Central Permitting Office at 1-800-662-7138. Permit staff will provide assistance with applications.



Clockwise: Farm Dealership at Grassy Lake (Scott & Carruthers), Inside the General Store at Grassy Lake, The James Niel Sheep Ranch south of Grassy Lake and Little Wonder Coal Mine south of Grassy Lake

## Grassy Lake & Purple Springs

**By: Karen Ingram**  
For the Taber Irrigation Impact Museum

The trip west was a long, hard trek in the days before the railway but as the trains reached further across the country so did the settlers. Each and every one who came west had an expectation of a better life than the one they were leaving. Ranchers and farmers arrived, seeing thick prairie grass blowing in the wind must have raised their hopes that they had found fertile land ready and waiting to become their homes, the place where they could raise a family, building a legacy for generations to come. They saw signs of water with the river, springs and sloughs on the prairie promising water for household and livestock. They found outcroppings of coal for use in heating their homes and perhaps enough to mine and sell while proving up a homestead.

According to the Grassy Lake, history book *Faded Trails*: "There were a few settlers in the district in 1903." Three more arrived that year and there were "35 homestead

entries to be settled the following spring". There were ranches in the area with from "30 to 550 head of livestock". This was becoming sheep country, with only one homesteader putting in a crop during 1904. The land rush began in 1907 with "speculators in the United States running special settler cars on the railroad into southern Alberta encouraging settlement".

With the arrival of more settlers the Grassy Lake railway stop was growing into quite the thriving community. Many of the businesses that had been in Taber for a number of years were opening second stores in the outlying community of and Grassy Lake. The railway station and general store were joined by other businesses, a lumber yard, a drug store with a Doctor office upstairs and a hardware store were all now part of the thriving village. There was a hospital with five wards above the drug store, a school opened and the future was looking good.

Grassy Lake was beginning to rival Taber

and looking like it may surpass the town to the west in population.

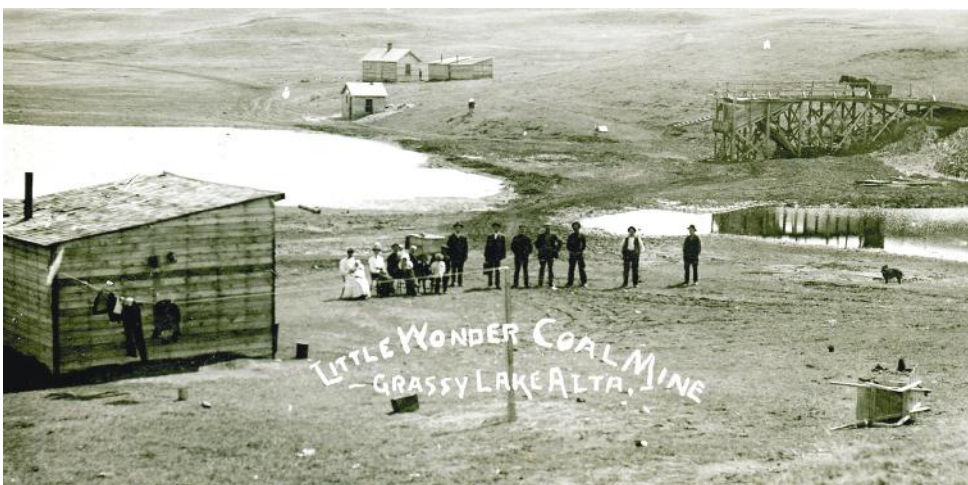
We have to ask what happened to change the future of this up and coming prairie town? The explanation may be found, at least partially, with a prairie fire. In 1915 a fire began a couple of miles east of Taber, fanned by winds it burned for at least 50 miles wiping out many of the businesses in Grassy Lake. Undeterred and optimistic most were rebuilt then in 1920 another devastating fire went through, destroying the business district once again. They never seemed to recover after this fire.

Purple Springs, the town named after the narrow leaf Vetch that grew near the springs that supplied water for a good portion of the farmers who decided to settle here. According to *Faded Trails*: "the town was founded in 1908 when James R. Milligan purchased land north of the CPR right of way that was homesteaded by William Duncan in 1906. Mr. Milligan was a land

developer and speculator from California who came here to start a venture for himself. He ordered a large General Store, hotel and land office to be built."

"By July of 1909 there was a store, lumber yard, hotel, land office and butcher shop along with three or more homes" making up the village of Purple Springs. The next year a blacksmith shop and machinery sales were added to the community. The town site was surveyed and filed by December 12, 1911, receiving approval by the Minister of Public Works for Alberta on May 19, 1912. The fires of 1915 and 1920 whipped through Purple Springs on their way past to devastate Grassy Lake. Like their neighbor to the east they never quite recovered and Purple Springs never became what it could have.

Life on the prairies was not easy but those who persevered managed to make the area their home. A home that lasted through more than one generation.



**July 21-27, 2019**  
**National Drowning Prevention Week**  
 LIFESAVING SOCIETY

## Taber Irrigation District Update

Drowning Prevention Week July 21-27

Did you know that there are drowning machines in the MD of Taber? Your children may be putting themselves at risk if they are playing in or around irrigation structures. Irrigation district canals have drop structures to follow sloping land and check structures so the water is deep enough for delivery. Water accelerates through structures and creates an undertow current that tends to pull objects back into the downstream pool. Even a person with a lifejacket can drown as they are repeatedly pulled under.

[thepelorusproject.org](http://thepelorusproject.org)

There is NO swimming or other recreational activities permitted in TID irrigation canals, and will be enforced with RCMP assistance. If that's not enough to convince you, along with the drowning risk, we also do not want children to be exposed to chemicals used to treat for aquatic weeds and algae in our canals or terrestrial weeds on canal banks. Please use the Taber pool and the great spray park TID contributed toward for your summer in-water fun! Swimming is available at some irrigation reservoirs, but not those in TID as we have no designated swimming areas.

If you take a boat to fish or tour on TID's Horsefly, Taber or Fincastle reservoirs, please respect private property when accessing and note these are shallow with frequent sand bars, so get your boat license, take it slow and wear a lifejacket. And always clean, drain and dry your boat and follow fishing bait rules to help prevent



the risk of zebra or quagga mussels from entering our waters.

For those who may walk or ride bicycles along canal driving banks, note that canal banks are steep and unstable.

Do not chase toys or pets down the bank. If you fall in, it can be very difficult to get out.

### Water Supply Situation

Alberta Environment and Parks did a terrific job of managing the headworks system to capture snow melt and rain events to fill the Waterton, St. Mary and Milk River Ridge reservoirs. SMRID storage is a bit below average but keeping water higher in the system ensures that it is available to be moved down when we need it and there is room to store water during cuts when we see local rain events. With the improved conditions TID raised our 2019 allocation from 12" to 14". We will review the water supply situation again in July. Check the TID website ([www.taberirrigationdistrict.ca](http://www.taberirrigationdistrict.ca)) for updates.

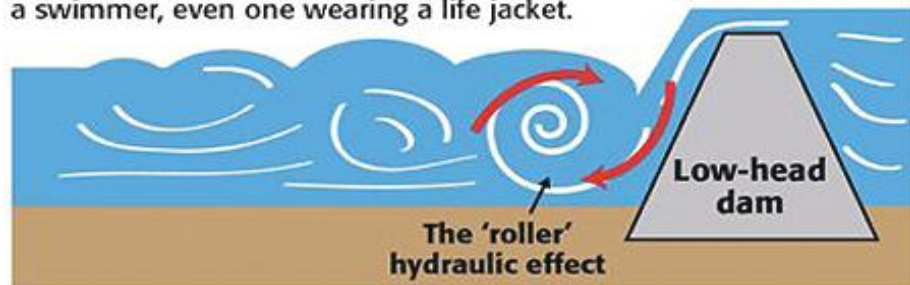
### A Few Reminders

TID canal driving banks are for accessing your turnout for operation and maintenance, not for hauling. Some are in better condition than others, so try to avoid rutting them up or pounding them out. Any damages associated with misuse will be billed to the offending party.

Please sprinkle your field, not our infrastructure. Wet driving banks and slopes can lead to instability and sloughing, and the landowner will be assessed the costs of repairs.

## Drowning machines

Low-head dams are known as "drowning machines," because the water spilling over the dam creates a hydraulic effect at the base of the dam's face. As water spills over the barrier, a "roller" is created as water circulates back into the face of the dam. The roller can trap a swimmer, even one wearing a life jacket.



## NEW - Small Business Sub-Class

Due to recent amendments to the Municipal Government Act, Council and Administration of the Municipal District of Taber have been granted the opportunity to divide the non-residential class into sub-classes which are defined in the regulations.

These subclasses are:

- Vacant non-residential property;
  - Small business property
- Other non-residential property

The new property assessment sub-class will provide property owners that have a non-residential assessment an opportunity to qualify their property be classed as Small business property. This fall, Council will review the 2020 budget, and the opportunity to provide a possible reduced tax rate to the non-residential small business subclass in the 2020 tax year. For more information on the new small business sub-class visit our website at

[www.mdtaber.ab.ca](http://www.mdtaber.ab.ca)

## IMPORTANT DEADLINES

### July 15 - Perennial Crop Insurance

Last day to file Report of Hay and Report of Export Timothy Hay in Storage Prior to Harvest.

### August 15 - Annual Crop Insurance

Last Day to file Report of Grain in Storage Prior to Harvest.

## REPORTING ALTERNATE CROP USE

Areas across the province have experienced limited amounts of precipitation during the current growing season. These conditions may prompt some producers to put their hay or annual crops to alternate uses.

- At least five days in advance of putting an insured crop to an alternate use, clients need to contact AFSC and arrange for a yield appraisal and the release of the insured acres.
- Provide the number of acres intended for alternate use and an estimate of the yield.
- Inspections strips or enclosures require prior approval if a client wishes to put the crop to use before the acres are released.
- Clients should review AFSC's Inspection Strip and Enclosure policies.



## DON'T FORGET!

- Deferrals: To facilitate tax planning, you can choose in advance to defer indemnities to the following tax year. There is no option to defer payment once an indemnity cheque has been issued to you.
- 2% online discount is available if you purchase Straight Hail Insurance online.
- Clients have fourteen calendar days after the date of the storm to report hail damage. Late reporting of hail damage after fourteen days will not be accepted.

For more information about AFSC's programs and services please contact us.

[www.AFSC.ca](http://www.AFSC.ca) • 1.877.899.AFSC (2372) • [@AFSC\\_AB](https://twitter.com/AFSC_AB)





## HOLY SPIRIT CATHOLIC SCHOOL DIVISION



**Registration begins January 7, 2019**

For new students registering for the 2019/2020 year, please bring your child's birth certificate and contact:



**St. Patrick School - Early Learning to Grade 5**  
5302-48th Street, Taber, AB  
Phone: (403) 223-3352  
[www.holyspirit.ab.ca/st.patrick](http://www.holyspirit.ab.ca/st.patrick)



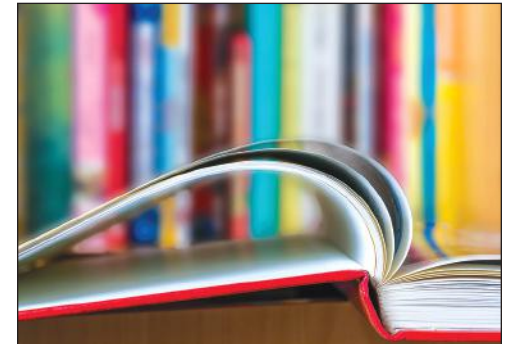
**St. Mary School - Grades 6 to 12**  
5427-50th Street, Taber, AB  
Phone: (403) 223-3165  
[www.holyspirit.ab.ca/sms](http://www.holyspirit.ab.ca/sms)

### Early Learning and Kindergarten Registration

- Our **Early Learning Program** is designed to stimulate the growing curiosity of children 3 and 4 years of age.
- **Kindergarten** is designed for children 5 years of age on, or before, December 31, 2019.

If you have any questions, or feel your child requires specialized programming, contact Early Learning Coordinator, Lynn Saler, at [salerl@holyspirit.ab.ca](mailto:salerl@holyspirit.ab.ca) or (403) 381-8495.

*Holy Spirit Catholic Schools...  
Christ-centered learning communities  
where students are cherished and achieve their potential*



## Grassy Lake Community Library

We have been very busy this spring as patrons and students are getting ready for the summer. Unfortunately, the Grassy Lake Community Library will be closed for the summer as we are undergoing renovations. Although we are undergoing renovations at the library, we will still run our Summer Reading Program. It will be at the Grassy Lake Community Hall, not at the library.

All are welcome between the ages 5-12. The dates and times are:  
TUESDAY, JULY 23;  
TUESDAY, JULY 30;  
TUESDAY, AUGUST 6  
TUESDAY, AUGUST 13  
Time: 10:00-11:30am.

Please come and join us for story time, crafts, games and prizes.

We will reopen Tuesday, August 27. The students and patrons are very excited about the renovations and are looking forward to September. The library will have new hours beginning in September. We will be open Tuesday-Thursday 8:30am-3:40pm. Please come into the library to view our new space.

**ATTENTION**  
THE LIBRARY WILL BE CLOSED IN THE SUMMER. THE SUMMER READING PROGRAM WILL NOT BE AT THE LIBRARY THIS SUMMER AS WE ARE UNDERGOING RENOVATIONS, but will take place at the Grassy Lake Community Hall.

## Life experience leads to counselling at FCSS

### Submitted by FCSS

From teacher to counsellor, Tim Krahn is gaining a unique experience during a counselling practicum placement with Family and Community Support Services (FCSS) until mid-August. He's also a part-time Low-German Mennonite (LGM) Family Support Worker. Even though both roles are separate positions since January, the two experiences intertwine. "I come from that background. I still speak the language" said Krahn.

"Through my LGM Support Worker position I do end up getting people into the counselling end of it. They kind of work hand-in-hand," Krahn noted.

Throughout Krahn's years of teaching, the aspects he found most enjoyable was sitting down with students one-on-one. "And helping them through difficulties they were experiencing at school. That's what got me starting to think about getting into the counselling field because counselling students was something I really enjoyed and felt I was doing something good," he said. "That got me thinking about going back to school."

So far, Krahn noted, working in the counselling field has been much better than he had originally anticipated. "It's been really good. FCSS is an excellent organization to work with. Great supports here and a good wide-variety of counselling experiences I am engaged in."

According to the practicum student, he's even getting some LGM clients, which is great news.

"I wasn't sure how that would work,



Photo submitted by FCSS

**FROM TEACHER TO COUNSELLOR:** *Tim Krahn is gaining a unique experience during a counselling practicum placement with FCSS until mid-August. He's also a part-time Low-German Mennonite (LGM) Family Support Worker.*

but it's actually working out quite well. It's been overall an excellent experience," he said.

Currently, Krahn is stationed in Taber usually two and half days a week. "But it's all very flexible because if something comes up on one of those days elsewhere, then I go elsewhere," he said.

On Thursdays, Krahn is in Coaldale and he has also travelled to Milk River and Barons to offer his services.

"I've been in Milk River and that I usually do in the late afternoon and evenings. I've also been in Barons, which I do in the evenings. I've kind of been all over the place."

Being able to visit different communities in southern Alberta is a great experience for the new recruit. "Every community is different. It's nice to get a taste of each community," Krahn said.

Prior to his roles at FCSS, Krahn was a teacher for many years at schools through the Horizon School Division in Grassy Lake, Vauxhall and Central School in Taber and at Twin Valley Christian, a private school, south of Purple Springs.

"Twin Valley is predominantly LGM and Grassy Lake was predominantly LGM, as well. It's still a public school. It didn't have a separate program, it was just Grassy Lake Chamberlain Public School under Horizon. It just so happened, it was predominantly 80 or 90 per cent LGM," he explained.

"Vauxhall, I taught in the Mennonite program there. I had a class, a Grade 1 and 2 class, of all LGM students. Some of them spoke no English, others were quite fluent in English," he said.

Central School in Taber, Krahn added, was similar. "I taught a Grade 1 and 2 class, all Mennonite part of the Mennonite program."

FCSS provides counselling services in [Coaldale](#), [Coalhurst](#), Milk River, Picture Butte, Raymond, Stirling, Taber and Warner. For counselling information or to book an appointment call (587) 370-3728 or e-mail [intake.coordinator@fcss.ca](mailto:intake.coordinator@fcss.ca).