

MD CONNECTION

Reeve's Report.....

Overland flooding repairs costly, Brewin

The overland flooding early this year surely dictated the actions of many – from cropping plans to municipal projects the weather and the effects of the spring overland flooding has impacted us all. Despite the delay in spring seeding it appears as if the crops have matured quickly with the very warm temperatures – in some cases the very dry conditions will affect yields. In the irrigation areas the water has been flowing steady.

During the event 58 culverts were damaged to the point of requiring replacement, 78 new culvert locations and 424 section of road were damaged. To date our crews have replaced or installed 37 significant culver structures and have completed repairs on 400 sections of road. Additionally contractors have completed an additional dozen large projects. From a peak of 260 miles of roads closed to 2 today we have made significant progress in restoring municipal infrastructure and will continue to work to improve it.

The costs related to the overland flooding was significant - \$1.6 million. As well the costs to private property owners was equally large. The M.D. of Taber has made an application to the Alberta Disaster Recovery Program for funding to assist in the repairs of municipal infrastructure and if approved citizens affected by the overland flooding may be able to make application to the province under a Disaster Recovery Program should our application be approved. As part of the criteria the provincial disaster committee seeks to determine if the event was significant regionally and that weather data supports the request for funding.

I'd like to congratulate Tom and Darla Machacek on being the MD of Taber nominee's and recipient of the BMO Farm Family Award at the Calgary Stampede this year.

Congratulations to the Taber Handibus Association who will be receiving their new bus in the coming weeks. The M.D. of Taber contributed funds to the purchase of this bus.



BRIAN BREWIN, REEVE

The province recently announced that a bus service will begin operating between Lethbridge and Medicine Hat (and points in between) in the coming months as part of the Rural Transportation Pilot program. The two-year program will evaluate the need and use of establishing a scheduled bus service in the area.

We'd like to thank all of the athletes, coaches, parents, volunteers and organizers of the recent Southern Alberta Summer games which recently concluded. It was a great

event.

As we are all aware the issue of rural crime continues to be an issue for us all. We invite all of our residents to be vigilant and to report suspicious behaviour if observed in our area. Much of the crime which is occurring in rural Alberta is a result of both drug use, thieves and criminals travelling from one area to another randomly committing crime as the opportunity arises as well as a permissive judicial system which permits repeat offenders to commit crime after crime without feeling the consequences. Rural citizens are becoming increasingly frustrated with this issue and law enforcement, the province and federal officials must begin addressing the roots of this issue: crimes committed to support drug use and repeat offenders.

I wish you a successful harvest season.

Sincerely,
Brian Brewin
Reeve

Municipal District of Taber

MUNICIPAL DISTRICT OF TABER

ADMINISTRATION OFFICE
4900B-50th Street
Taber, Alberta, T1G 1T2
Phone: 403-223-3541

We're On the Web:
www.mdtaber.ab.ca

Council Members

MERRILL HARRIS (Deputy Reeve)
Division 1 **403-634-0462**

JOHN TURCATO
Division 2 **403-634-1591**

BRIAN BREWIN (Reeve)
Division 3 **403-655-2463**

TAMARA MIYANAGA
Division 4 **403-308-6538**

JENNIFER CROWSON
Division 5 **403-308-8610**

MURRAY REYNOLDS
Division 6 **403-635-8449**

LEAVITT HOWG
Division 7 **403-622-1408**

Municipal District of Taber Staff

- Derrick Krizsan** – Municipal Administrator
- Bryan Badura** – Director of Corporate Services
- Patrick Hanson** – Director of Assessment
- Angel Svenes** – Assessor
- Brent McQuaig** – Assessor
- Bryce Surina** – Director G.I.S./I.T.
- Tanya Peterson** – Lands and Reception
- Joanne Bronsch** – Development Clerk
- Corry Moline** – Utilities Clerk
- Candice Robison** – Administrative Clerk
- Jill Speer** – Tax Clerk
- Sherry Crombez** – Payroll/Benefits Clerk
- Dean Parker** – Information Services Technician
- Brian Peers** – Director of Municipal Lands
- Jason Bullock** **403-634-4429**
Director of Agricultural Services
- Jack Dunsmore** **403-634-7198**
Director of Planning and Infrastructure
- Jeremy Wickson** **403-634-2713**
Director of Public Works
- Craig Pittman** **403-634-8082**
Superintendent of Public Works
- Ginger Rose** **403-634-2732**
Director of Hamlets and Utilities
- John Giesbrecht** **403-634-2944**
Hays Hamlet Foreman
- Blaine Francis** **403-634-3410**
Grassy Lake Hamlet Foreman
- Brian Schafer** **403-654-4359**
Regional Fire Chief
- Joe Bruyere** **403-223-1180**
Deputy Regional Fire Chief

WHAT'S IN THIS ISSUE:

Emergency Management BriefsPage 3	Operations and Maintenance BuildingPage 12
Communities in BloomPage 4	Taber Shooting FoundationPage 14
Contracted workPage 6	Shelterbelt Tree ProgramPage 16
Library NewsPage 8	Grand opening of Station 7Page 19
Overland Flooding Repair updatePage 10	Taber Adult Learning programsPage 20





ASB staff cutting and bagging nodding thistle near Fincastle



ASB staff clearing problem trees from a ditch

AGRICULTURAL SERVICE BOARD Vegetation Management

The Agricultural Service Board of the MD of Taber is actively involved in vegetation management and control for much of the year. Controlling vegetation is not only important to support local agriculture, but is also part of the Agricultural Service Board's mandate and a responsibility under the *Weed Control Act*. Vegetation management has many forms, including

weed inspections, hand-pulling weeds, mowing, spraying weeds, and tree and brush control, just to name a few. Here are some of the vegetation management activities that the Ag Service Board performs throughout the year:

SPRING

Springtime sees the Ag Service Board using ATV sprayers to control weeds such

as dandelions in hamlets, parks, cemeteries, campgrounds, other recreation areas, and MD properties. The ATVs are able to spray in these sensitive areas with a product that will control the weeds, but leave the grass to provide better recreation areas for MD residents to enjoy. All ASB staff that participate in spraying operations are trained and licensed in pesticide application and have years of experience in weed identification.

SUMMER

As things heat up and more weeds and vegetation begin to grow, the Ag Service Board is very busy in management activities. Roadside sprayers apply products to control weeds, which helps the grass to grow in ditches and controls weeds from spreading into neighbouring fields and yards. Roadside mowers cut the grass and weeds to stop the spread of seed and to make the roads safer for the travelling public. ASB staff are also busy during the summer months inspecting areas where noxious weeds are growing, and working to control these problem weeds such as knapweed, baby's breath, scentless chamomile, purple loosestrife, and nodding thistle. In cases where noxious weeds are growing on private property, the Ag Service Board works

with the landowner to find the best way to manage the vegetation and to create a long-term plan for control.

FALL

During the autumn months, roadside mowers cut the grass a second time. This continues to control the weeds, but more importantly helps to reduce snow drifting in the wintertime. Work continues in the fall to control vegetation through spraying and pulling weeds.

WINTER

While most of the vegetation is dead or dormant during the cold months of winter, the Ag Service Board is still very busy in vegetation management. Crews work in the ditches to help make the roads safer by removing trees that could fall onto the road, or by cutting brush or trees that are impeding sightlines. Tree removal in ditches also helps to maintain municipal infrastructure, such as allowing water to properly flow through the ditches during floods or rainfall and making clear paths for graders, snow plows, and other equipment to travel.

If you have any questions or concerns about vegetation management in the MD of Taber, please contact the Agricultural Service Board at 403-223-8735.



ASB staff cutting flowering heads of purple loosestrife near Vauxhall

Emergency Management Briefs

– *Brian Schafer Director of Emergency Management*



A Photo of Lt. Peters of the MDT Regional Fire Service - Kenow Fire - Sept. 2018

The overland flood event was a busy time for us all. MD of Taber staff along with our 117 volunteer Regional Fire Service members, multiple organizations and volunteer groups assembled together to help us get mitigate the flood event with the least amount of damage as possible.

During the event communications with our partners were kept open with daily briefing conference calls keeping all parties informed on the situation as things unfolded. These daily

conference calls were held until the very last day of the event. Our social media campaign was very successful and very well viewed and shared. Many media interviews were also attended to help keep the citizens up to date on the situation.

After the event was over a post flood debrief was held where the organizations involved got to express their views on what we did well and what we could do different for the next event. Thank you to the following parties for their

cooperation during the event; Taber Irrigation District, St. Mary River Irrigation District, Bow River Irrigation District, Alberta Emergency Management Agency, POC (Provincial Operations Center), Alberta Environment, AB Transport, Volker Stevin, RCMP, Samaritan's Purse, Alberta Health Services, Canadian Red Cross (Lethbridge), County of 40 Mile, Cypress County, the Village of Barnwell, Town of Vauxhall and Town of Taber, Horizon School Division, Holy Spirit School Division, 1st Student, the River Forecast Centre and Canadian Natural Resources Ltd.

After the post event our Tri-Party Emergency Management plan that we share with the Town of Vauxhall and the Village of Barnwell was updated with new contacts that we received during the event. There are many NGO's (Non-Government Organizations) available that were added so we can reach out to if needed for our next event.

Would you like to volunteer with us to assist when another emergency occurs? Contact Regional Fire Chief / Director of Emergency Management Brian Schafer for more details. We are looking for volunteers for the MD of Taber, The Town of Vauxhall and the Village of Barnwell. Jobs such as working at the Emergency Reception center is where the

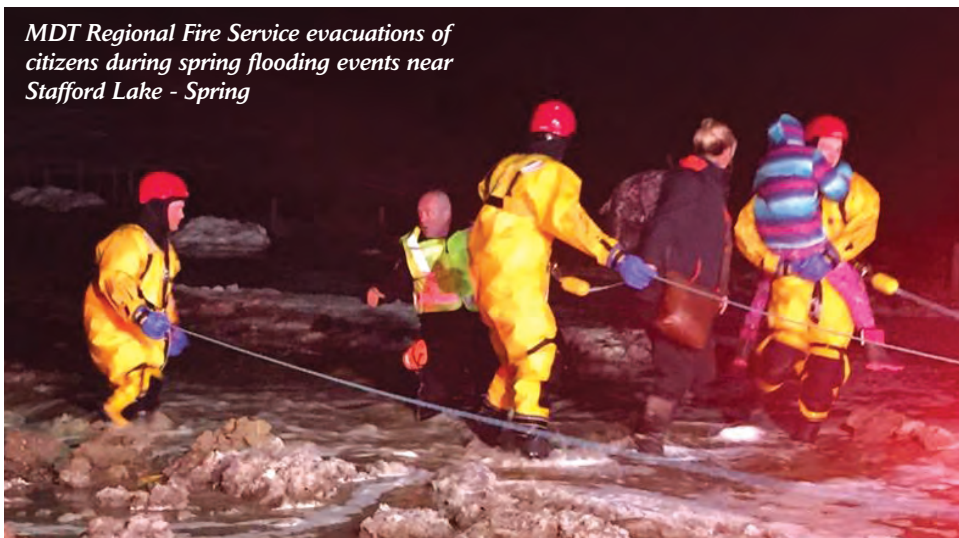
biggest need would be. Job duties would be registration, arranging food, shelter, first aid and many other jobs as required. We would like to have more people signed up and trained so when the next emergency hits we can be ready and roll out the process of utilizing the volunteers. All volunteers must be vetted and provide a criminal record check to be authorized to volunteer.

Staff of the MD of Taber, Town of Vauxhall and the Village of Barnwell will also be attending some upcoming training provided at no charge to us by AEMA (Alberta Emergency Management Agency). These courses will be offered at the MD of Taber office and will offer courses such as the Scribe course, ICS (Incident Command System) 200 & 300 and the ECC (Emergency Coordination Center) course.

In March 2019 AEMA, the MD of Taber, the Town of Vauxhall and the Village of Barnwell will be holding two mock disasters. One will be held in Barnwell and the other at the same time with the Town of Vauxhall. A Mock tornado will touch down in both communities allowing us to test our emergency preparedness and to identify where we can improve our response.

Thank you to AEMA for providing us with the learning opportunities.

MDT Regional Fire Service evacuations of citizens during spring flooding events near Stafford Lake - Spring





Annually the Community in Bloom Committee undertakes a Rural Beautification Contest. Two competition categories are judged among the nominees:

Category 1 – Residents located on at least 39 acres

Category 2 – Residents located on 38 acres or less and includes residences in the Hamlets of the M.D. of Taber



Division No. 1, Category No. 2
Anneliese and Joop Daniels, Huckleberry Crescent

As we drive into the yard, we see a fence tall enough to keep the deer out but we can still tell what a treat awaits us. An antique hay mower imprinted with their name, stood just inside the gate. Everywhere we looked there were beautiful trees, gorgeous flowers, and spacious lawn. As we ventured into the yard, we saw a huge vegetable garden full of four varieties of squash, pumpkins, corn, broccoli, pole beans, green beans, peas, carrots, cauliflower, potatoes, anything and everything to make delicious meals this winter. The garden is garden is planted with their own seeds.

Adjacent to this garden were thousands of gladiolas, as well as snapdragons, all kinds of lilies, yarrow, delphinium, status, daisies, phlox and yucca.

When we thought had seen everything, we were ushered through a gate with a handmade sign indicating we were

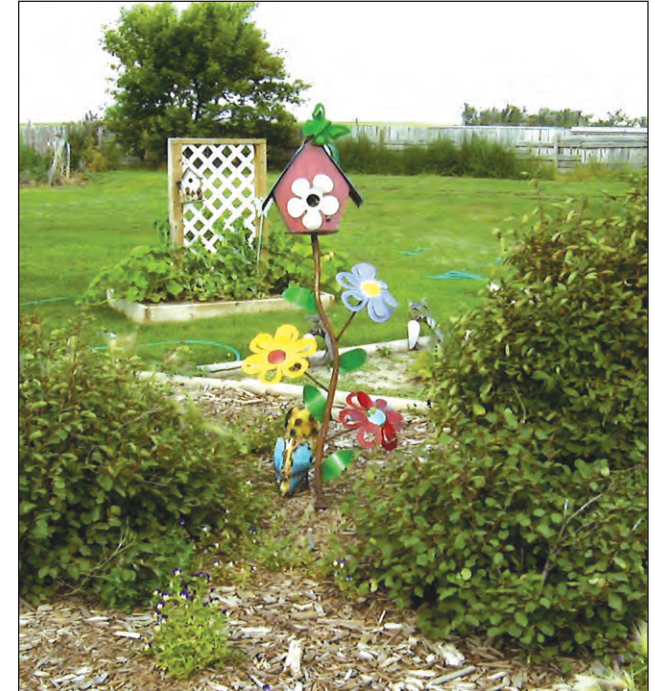
entering the orchard. We wandered down a lawn pathway and admired various apple, pear, plum and cherry trees, as well as raspberry, red currant and saskatoon bushes, and strawberries. The orchard was sheltered by caraganas.

And we were not finished yet. We thought of sitting on the veranda of the garden shed to watch the goldfish swim lazily and listen to the water trickle over the rocks. A virginia creeper nearly covered the shed.

A handmade very large windchime was nestled in the trees near a chiminea. A few steps further was a very large, handsome windmill hand crafted by Joop. It turned and the bottom walls could be opened, probably for storage.

Next we noticed a wonderland of fun play equipment for the grandchildren.

It was almost impossible to leave, even on our way out were more flower beds full of potentillas, bee balm, phlox, peonies, day lilies, veronica, just to mention a few. The whole area is full of trees, each one planted in just the right place.



Division No.1, Category No. 2,
Ron and Dawna Harker

In just a few four years, Ron and Dawna Harker have created a yard full of surprises in every corner of their 2.66 acres. They have planted many trees and flowers that provide a cooling effect even on such a hot day. When we round the corner of their home we see a huge deck with lots of comfy seating. All summer, this is where they host pig or beef roasts, prepared in a very large cinder brick roaster for friends and family. Another deck very near by, sports a huge swing for relaxing.

As we proceed further into the yard, we spy a very large pool, above ground. Stairs lead to another deck, directly adjacent to the pool, and all constructed by Ron. This deck has a large table and chairs, and the roof frame has a canvas covering to escape the sun after a dip in the water. Children use a slide directly into the pool from the deck floor.

There are other areas on the lawn with slides and swings, lots of places for kids to hang out. A firepit is protected from a west wind with a fence, more benches, tables and swings. In randomly placed raised beds, there are all manner of vegetables and strawberries. Lillacs have been started this year, and join sour cherries, saskatoon bushes and many apple trees. Ducks swim on the dugout.

The yard is full of interesting statuary, potentillas, peonies, lambs ear, verbena and so much more. They have created a great family getaway, for children of all ages to enjoy.

Thank you to the Community in Bloom Committee for their work on this project and to all municipal residents who work to beautify their property.

We all enjoy their labors as we travel past their property!



Division No. 4, Category No. 1
Casey and Monique Koomen 16401 RR 10

From a pasture for the horse, to a park for the family. What a transformation when one plants over 500 trees and hand seeds the lawn. Birds are singing as we pull into the driveway lined with tall planters. Two big dogs amble over to check us out and don't appear to be a threat. A large wooden moose is nestled in a group of trees in the middle of the spacious, well tended lawn. Casey does all the fertilizing by hand. Monique raises all the flowers in a greenhouse from seeds that she has harvested. They have added a wraparound veranda to the house, which allows them to enjoy their outdoor kitchen, complete with an eight foot granite table. The table was faced with granite scraps by Monique, evidence

that she is very creative. Large pots with spikes that have been stored in the shop for several winters stand guard as one enters the veranda outfitted with comfortable seating.

When we round the home to the south, a very large cactus has been growing next to the foundation for 15 years. Monique does all of the yard work, Casey only assists with the irrigation.

A row of trees separates the home and yard from the shop. There are apple trees near the garden, which is filled with all manner of vegetables. Everywhere you look, there are flower pots, overflowing with petunias, geraniums, spikes, and trailers.

We are quite sure when the day's work is done, and family comes home to visit, they all enjoy gathering around the rock fire pit, possibly to roast wieners and make s'mores.





The M.D. of Taber CONTRACTED WORK

It's shaping up to be a busy remainder of the construction season for contractors working on behalf of the municipality. As many spring flood related projects requiring contractor assistance have been completed, including:

- Township Road 10-2 west of Range Road 17-3 – Road Replacement and culvert Installation
- Township Road 14-2 near Range Road 16-0 and 15-5 – Culvert replacements
- Range Road 16-3 north of Township Road 13-0 – Road slough repair
- Township Road 15-0 and Range Road 17-1 – Culvert replacement

The municipality will continue working toward construction completion on many capital and operational projects. These projects include:

- Regional Walking Trail

The Municipal District of Taber has continued working toward the Regional Walking Trail from the M.D. of Taber Park to the existing Town of Taber Trail. The project is has been awarded and construction is scheduled to begin in August. This trail will connect to the existing Town of Taber trail at the top of the river valley and will connect to the M.D. of Taber Park below.

- 2.5 meter finished paved width
- Maximum 14% grade
- 372 meters in length
- 5 meter x 5 meter rest area near the top including a bench and trash can
- 2 meter x 4 meter Rest area 100 meters from bottom including a bench and trash can
- Lockable swing gates at top and bottom of trail
- Hays and Grassy Lake Water Plant Backup Power

This installation of these backup generators and automatic transfer switches will ensure safe drinking water is maintained throughout a long term power outage. Upon completion, each water plant within the municipality will have backup power ensuring quality testing, digital communications and reporting and pressurized systems do not enter a negative pressure state.

- Hays Hamlet Surfacing Improvements

Base preparation and asphalt paving along portions of Central Street, 3rd Street, 3rd Avenue, and 7th Street.

- Grassy Lake 1st Street North Surfacing Improvements

Base preparation and asphalt paving along 1st Street North. This project will be the final stage to accommodating a structurally sound roadway complete with an underground storm sewer collection system.

- BRID Drop 5 and Bridge File 80155 Replacement (Enchant Area)

The M.D. of Taber and the BRID are working collaboratively to replace the existing drop structure and bridge. This drop structure is a very important piece of infrastructure that would have large economic impact to the area should it completely fail. These are currently separate structures that are nearing the end of their useful life. A substantial savings will be realized by combining these structures into one. The construction of this project is scheduled to begin later this fall after irrigations waters have left the BRID main canal.

- Enchant Industrial Lot Servicing

Potable water and sewer servicing to 3 new industrial lots within the Hamlet of Enchant.

- Bridge File 80046 (east of Taber)

Replacement of a bridge sized culvert under Township Road 10-0 west of Range Road 15-4.

- Township Road 11-0 east of Highway 36 – Pipe bore

The existing culvert crossing has separated and is damaged. Contractor will bore under the roadway with a smooth wall steel pipe to continue to accommodate drainage. The existing culvert will be partially removed and partially filled with grout.

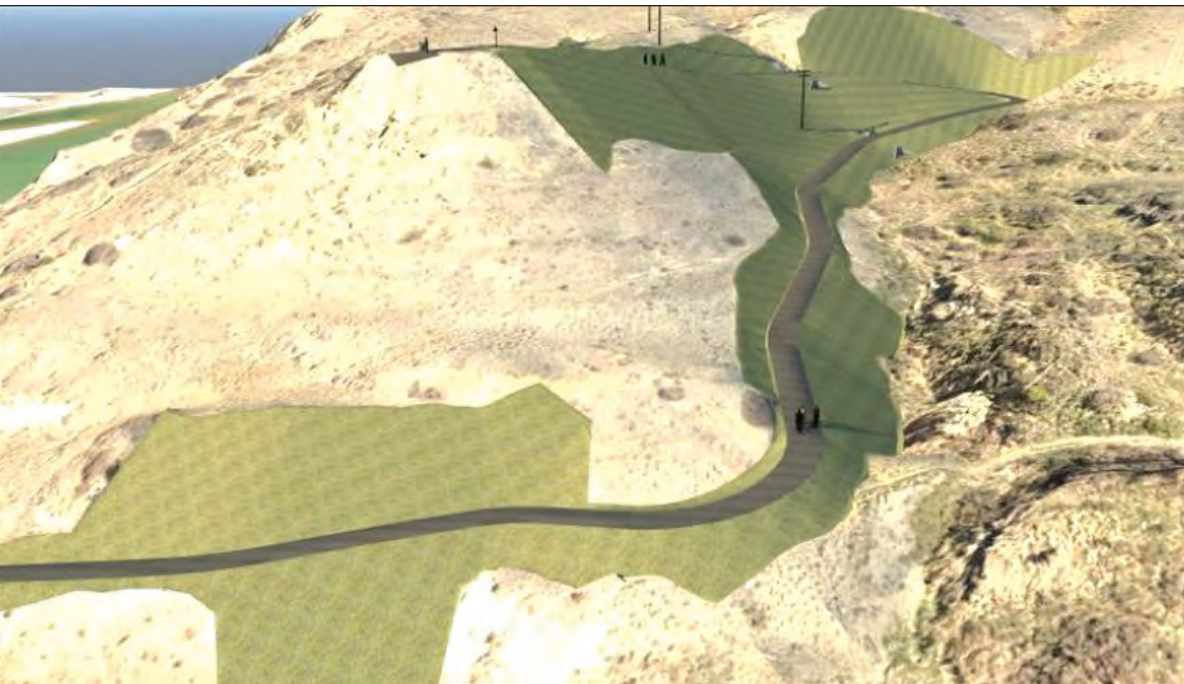
- Range Road 19-0 north of Highway 521 – Ditch work

Substantial water erosion has occurred through the roadway and ditch system. This work has been awarded and construction is scheduled to begin in August.

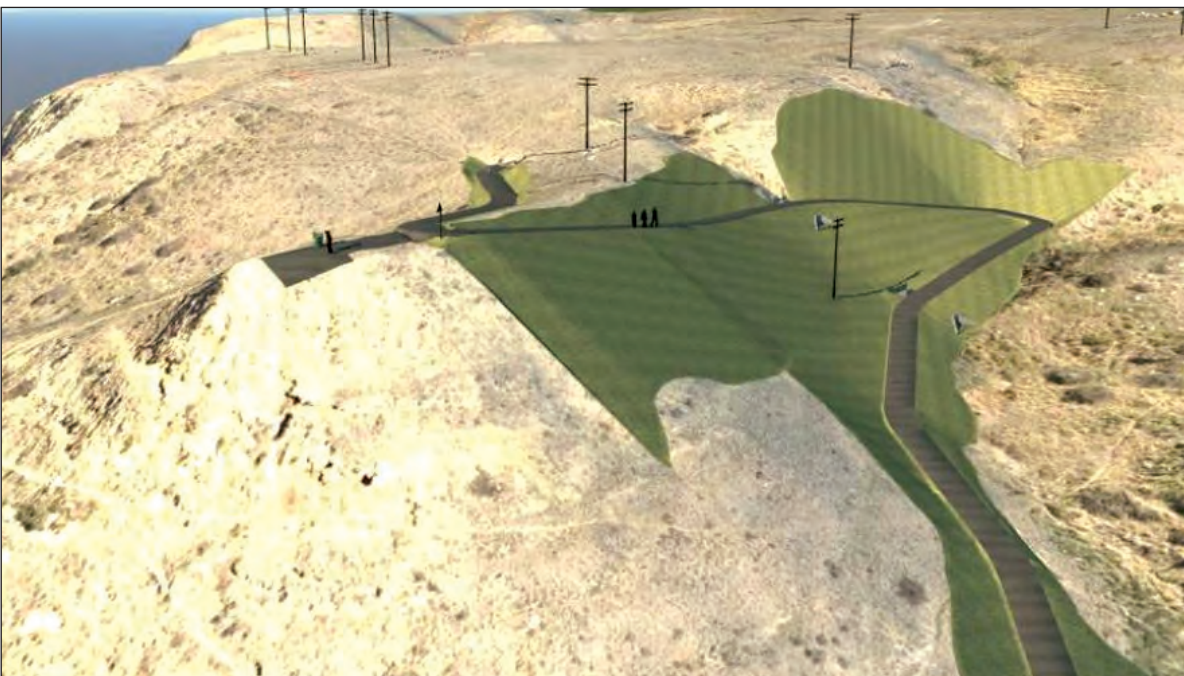
Bottom portion of the pathway looking North-East



Middle portion of the pathway looking North



Upper portion of the pathway looking North-East



Irrigation Bylaw in Effect

The Council of the M.D. of Taber implemented the Irrigation of Municipal Road Bylaw in an effort to prevent injury or death of the road travelling public as a result of a wet and rutted road left as a result of a pivot end gun sprinkling an M.D. road.

Travel many municipal roads and take a look at the midpoint on an irrigated quarter section and you might see the effects of what a pivot end gun discharging between 75 and 150 gallons per minute will do to a road surface.

The M.D. of Taber has received many complaints from drivers who have experienced sudden wet and rutted roads, or have experienced the shock of having the full force of an end gun discharge hit the windshield unexpectedly.

Please ensure that your pivot end guns are set correctly so that no water escapes onto the municipal road.

This year we have conducted a trial program and placed water on a few gravel roads in the area.

The trial program was a failure. We grew 0 tonnes of gravel. Zero. Despite all the efforts watering rock, sand and stone we couldn't produce any larger gravel. We can now categorically state that watering roads does not increase gravel size.

Please don't irrigate the roads. Please double check your pivot end gun settings.





Taber Public Library

Please join us again in the fall for our regular programs that include Duplo Play Day – Tuesday mornings at 10:30, Tots and Tales every Thursday morning at 10:30 am, Taber Stitch and Craft Group every Thursday at 1:00 pm, Basic Computer, Tablet or Device Help the third Thursday of the month with 2 sessions, either 6:30 or 7:30 pm, Family Movie Night is the last Friday of every month at 6:45 pm and Coffee and Cookies Day continues all year long!

We have quite a few video conference sessions booked for late summer and early fall. Topics include: Discovering Dinosaurs, Campfire Fun, Pirate Tales, Past, Present and Future of Irrigation and Financial Planning for Post Secondary School. Please check our website, the town utility bill, facebook page and newspaper for times and dates.

Sept 8 is Family Literacy Day and we will be celebrating by hosting a “Grown Ups Read Things They Wrote as Kids” type event. Check out that website as well as “Mortified” to understand what we are planning. In a nutshell, we are giving you an opportunity to read

something that you are mortified about that you wrote a while back. It is meant to be light and humorous. Stories do not have to be very long. Please pre-register for this event. The hilarity will begin at 2:00 pm.

September 27 is the fall start up date of our Book Worm Book Club. If you are interested in joining this year please pre-read A Spool of Blue Tread by Anne Tyler. The meetings are at 11:15 am to noon. Please check the website for future book club dates.

Oct 11 Opioid Information session and Naloxone training from 7:00 to 8:30 pm. Please join Jill from ARCHES Lethbridge to learn about this serious problem and how you can help. The Naloxone training is optional and is half an hour. Please pre-register for this at the front counter.

September and October will also see the Lethbridge Stained Glass Artisans display of their art at the library. Stop by to see the beautiful and unique work!

The Grassy Lake Community Library

The Grassy Lake Community Library has had a great summer so far. The Summer Reading program continues to be a popular activity for patrons. The patrons are enjoying the reading, crafts and activities. Also, the computers and iPads are also well used. The Reading Program will continue for 3 more sessions on Tuesday August 7, 14 and 21,

from 10:00 am-11:30 am for ages 6-12.

Our regular hours will start on September 4. Our library will be open Monday-Thursday 8:30am-3:40pm. Come in and check out our selection of books, DVDs and other resources.

Enchant Community Library

We at the library are so excited; we did receive our funding from the Community Foundation of Lethbridge and Southwestern Alberta for \$4,000. We applied with the cooperation of the M.D. of Taber who allowed us to collaborate with them since we ourselves do not have charity status and that is a criterion of the Grant. We asked for the funds to replace our aging floor (26 years) and with the help of the Foundation staff, completed our application and waited to see if we were a viable project since so many organizations could apply with all the projects equally as important to their communities. In our area, quietly

taking on this task was Arlene Parkinson, a member of the Community Foundation Grants Committee. Many thanks to her and those on the Community Foundation Grants Committee and Board of Directors who take the time out of their busy schedule to make these projects happen.

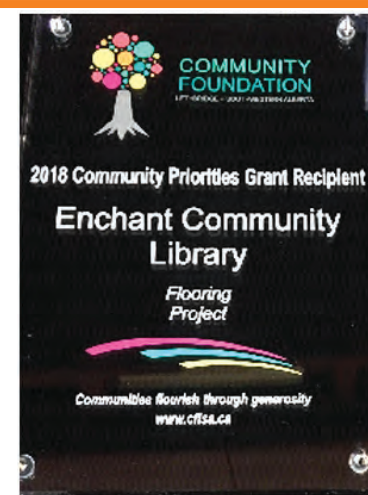
We are extremely pleased with the results of the flooring adding a fresh, new look to the library.

“Enchant Community Library gratefully acknowledges the financial support of the Community Foundation of Lethbridge Southwestern Alberta, a public foundation serving the community of Southwestern Alberta.”

Enchant Community Library would like to thank Community Foundation of Lethbridge Southwestern Alberta for their generous grant of \$4,000.

The funds used for the Enchant Community Flooring Project.

“Enchant Community Library gratefully acknowledges the financial support of the Community Foundation of Lethbridge Southwestern Alberta, a public foundation serving the community of Southwestern Alberta.”



2018 Municipal Property Assessment - Summer Newsletter

2018 PROPERTY ASSESSMENT RE-INSPECTION CYCLE, SALES VERIFICATION INSPECTIONS, AND ANNUAL INSPECTIONS

We are currently re-inspecting all properties in the Hamlets of Grassy Lake, Enchant, and Hays. Time permitting we will visit some additional rural properties. As is done every year, sales verification inspections will occur throughout the summer and fall at properties whose sales were registered with the province between July 1, 2017 and June 30, 2018. Lastly, annual property inspections will begin mid to late September, for reasons such as: new construction, demolitions, renovations, or changes to use of land and/or buildings.

Notification of Access & Request for Information

Assessors will be visiting properties throughout the municipality this year to verify property information for the purpose of ensuring fair and equitable assessments. Assessors carry identification and will present it upon request. If you have questions or concerns, please contact us at the MD of Taber Administration Office.

FLOOD DAMAGED PROPERTIES

This spring, extensive overland flooding occurred across the MD of Taber, as well as in other municipalities across Alberta. As a result, some residential, farm, and non-residential properties suffered *significant* damage. If you have any assessed improvements that *may not be repaired* through property insurance, or are undergoing significant repair this year resulting from flooding, please contact the Assessment Department so we can flag your property for inspection (as time permits). This will assist us in maintaining an accurate record of your property assessment.

RESPONDING TO 'REQUEST FOR INFORMATION' LETTERS

If you have received a 'Request for Information' letter (RFI) in the mail, please take the time to fill it out and return it at your earliest convenience. The RFI is very useful in the timely gathering of property assessment information necessary to prepare the assessment. Some of the information gathered by these letters include: sale verification, property re-inspection informa-

tion, and income/expense data for income-producing properties. If you need assistance with completing your RFI, please contact us at the Administration Office. The MD of Taber Assessment Department sincerely thanks you for completing these forms and returning them at your earliest convenience.

Please note that *if you do not complete and return the RFI when requested*, it may affect your right to appeal your property assessment, should you wish to do so in the future, per Section 295 (1) & (4) of the Municipal Government Act as follows:

"...Duty to provide information

295(1) A person must provide, on request by an assessor, any information necessary for the assessor to carry out the duties and responsibilities of an assessor under Parts 9 to 12 and the regulations. ..."

"... **(4)** No person may make a complaint in the year following the assessment year under section 460 or, in the case of designated industrial property, under section 492(1) about an assessment if the person has failed to provide any information requested under subsection (1) within 60 days from the date of the request. ..."

TABER, GET YOUR TASTE ON

From field to fork, game to gourmet, it's all about enjoying wild food at its best. Help us welcome an impressive lineup of chefs at
Taber Pheasant Festival's annual culinary event!

Game to Gourmet Pheasant Tasting

- Monday, October 22th, 7 pm @ Heritage Inn (Tank 77)
- Try a variety of dishes featuring pheasant
- Live music by Tanner James
- The event supports research and helps people connect hunting, conservation, and habitat
- Tickets are \$15.

Visit www.taberpheasantfestival.com
or call 780-410-1999

Chefs

Chef Sean Cutler, Chef Nate Novick, Ed Johnson,
Executive Chef Jason Barton-Brown and
Scott Pohorelic





Campus site work



Gravel crusher



Culvert repair



Culvert repair

Overland Flooding Repair Update

The M.D. of Taber Public Works department has been doing extensive repair work throughout the MD to address the damages that were caused during the spring 2018 overland flooding.

The majority of roadways that were affected have been graded and spot gravelled and will be frequently re-worked by road graders this season to ensure that the repairs are sufficient and to identify areas where more extensive repairs are required.

If you have a road concern, please contact the M.D. of Taber at 403-223-3541 and we will promptly review the matter and take appropriate action.

As of July 13 the following are the repair completions:

- 58 damaged culverts that will require replacement **Completed 32 of 58**



Culvert repair



- 78 new culvert installations required
- 424 damaged sections of road

Completed 5 of 78
Completed 400 of 424

Only 2 miles of roadways remain closed and repair work is scheduled in the coming weeks. During the peak of the flood event there were 300 miles of roadway that were closed and there has been a dedication of resources by council to ensure roadways would be open for use by the public.

M.D. of Taber grading, gravelling and crushing operations have been increased in order to address the road and culver damages sustained by the Municipality. Roads damaged by flooding will continue to be prioritized for observation and necessary maintenance as required this year to ensure that the roads are stabilized are prepared for harvest season.



Off to the next job



Gravel operations



Temporaet road repairs



Road grading



The M.D. of Taber Operations and Maintenance Building Construction is Complete



The replacement of current operation and maintenance buildings at the existing shop site – (some of the buildings were completed when Louis St. Laurent was Prime Minister of Canada) is nearing completion!

An Open House at the new M.D. of Taber Municipal Campus was held on August 1, 2018 with 300 people attending to tour the new facility.

Initial planning for the facility was initiated in 2013 with a condition and functionality assessment undertaken of existing buildings in 2014 with a building design committee and engineer selected in 2015, site selection and acquisition of the land

and tendering of the project in 2016 and initiation of construction in 2017.

The building is 33,536 ft² in size with a shop size of 25,319 ft² and an office housing the Public Works, Agricultural Service Board and Infrastructure functions of the M.D. along with change rooms, meeting area and offices comprising 8217 ft².

The pre-tender engineers estimate for the project was \$7,762,000. The contract has been completed for \$7,400,000. Municipal construction forces will undertake the civil portions of the project amounting to \$1.8 million and includes site grading, stormwater retention and road ways. As well

other municipal staff including the ASB will assist in site landscaping and other improvements at the site. The Council commends municipal staff on their ability to take on and complete the substantial civil portion of this project which will provide considerable value to the project and savings to municipal ratepayers.

The project was funded through municipal reserves which had been previously earmarked for this project.

The site is sufficiently large to accommodate all municipal operations for the long term, is visible and convenient, is located on a double divided highway with improved intersections for an added measure of safety for the travelling public and is serviced

by an M.D. of Taber service road that will provide unimpeded access for heavy municipal equipment.

The building features 5 equipment bays, 1 welding / fabrication bay, multiple equipment lifts and overhead cranes. The building will house staff responsible for the maintenance of municipal equipment as well as administrative offices and meeting rooms for the public works and agricultural service board departments of the municipality. Approximately 45 public works and agricultural service board staff members would report to this facility daily with all but 7 of them leaving to perform road construction and road maintenance work as well as other duties throughout the municipality.



General Information on the Operations and Maintenance Building:

- 2013 - Initial planning initiated
- 2014 - Condition and functionality assessment of existing buildings
- 2016 – Finalized lot development and building design accepted by Council
- December 2016 – Project awarded
- January 2017 – Construction Start
- May 2018 – Substantial Completion
- July 2018 – Final Completion and Occupancy
- Engineering Services – MPE Engineering Ltd.
- Architectural Services – Dejong Architecture
- Geotechnical Services – Tetra Tech
- Prime Contractor – Dawson Wallace
- Building to accommodate approximately 45 employees
- Building will service approximately 250 pieces of equipment
- Civil
 - Site size approximately 40 acres
 - Approximately 100,000m³ of earth moved
 - Reservoir capacity to Full Service Level – 5920m³
 - Approximately 11,000 tonnes of aggregate hauled in
 - Approximately 700m of waterline installed (fire protection)
 - Storm water management through collection and retention of runoff
 - Septic field with Septic Tank – 5600 Imperial Gallon
 - Cistern water – 5000 Imperial Gallon
 - Paved Access for employees and visitors
- Paved Parking Lot with 56 parking stalls
- Heavy Access for operations and delivery
- Majority of the earthmoving work completed by Municipal District forces
- Building
 - Length – 85.04m (279 ft)
 - Width – 36.6m (120 ft)
 - Office – 763.4m² (8217 ft²)
 - Shop – 2352.2m² (25319 ft²)
 - Total – 3115.6m² (33536 ft²)
 - Bay Length 36.6m (120 ft)
 - Bay Width ~ 9m (29.5 ft)
 - Peak Height – 12.96m (42.5 ft)
 - Wall Height – 11.37m (37.3 ft)
 - Walls built primarily from pre-stressed structural concrete panels
 - Open web steel joist roof structure
 - Floor with heavy structural reinforcement to carry heavy equipment load
 - Facility includes:
 - Shop Portion
 - Welding Bay (Bay 6)
 - 3 Working Bays (Bays 3,4,5)
 - 2 Working Bays with Equipment Lifts (Bays 1 and 2)
 - Parts/Shipping Area
 - HVAC/Utility Area (North Mezzanine)
 - Tool Storage Area
 - 2 Offices
 - Washroom
 - ASB Meeting Area (South Mezzanine)
 - 1 – 15 tonne overhead crane spanning Bays 1,2,3
 - 1 – 10 tonne overhead crane spanning Bay 6
 - 1 – 4 post automotive lift
 - 1 – 2 post automotive lift
 - 1 – 4 post heavy equipment lift
 - 1 – heavy recessed scissor lift
 - Office Portion
 - Reception area
 - Training / lunch room with retractable wall
 - Kitchen
 - Women's Locker Room with washroom
 - Men's Locker Room with urinals
 - Laundry/Storage Room
 - Utility and Janitorial Storage
 - 5 Washrooms
 - Server (Computer) Room
 - Meeting Room
 - Electrical Room
 - Mechanical Room
 - 6 Offices
 - 4 Work Stations
- Communications
 - Wireless Radio Link – 900-1000 Mbps
 - Tower (Admin Building) to Tower (O & M Facility) Communications
 - Internet
 - Phone
 - Network
- Fire and Security
 - Fob system complete with software
 - Motion and Video Security
 - Fire rated doors where required
 - Wet sprinkler system throughout
 - Pump House connected to water supply to provide ~150 psi pressure throughout
- Financials
 - Estimated Contract Price – \$7.76M
 - Tender Price - \$6.8M
 - Completion of Contract Price - \$7.4M
- Work to be Completed
 - Minor site grading and topsoil placement
 - Grass seeding, landscaping, and irrigation
 - Gravelling of the compound area
 - Chain Link Fence (1300m)
 - "Operations and Maintenance Facility" Sign Installation
 - Site lighting along the Heavy Access road
 - Relocate current fuel station to campus site

MD CONNECTION

Taber Shooting Foundation and the M.D. of Taber Sport Shooting Complex

The M.D. of Taber completed the construction of the M.D. of Taber Shooting Complex in 2016.

The facility, which is located north of the M.D. of Taber Municipal Airport on Highway 864, boasts a 50 metre, 100 metre, 200 metre, 600 metre, a 5 bay action shooting range and an archery range.

The range is operated under lease by the Taber Shooting Foundation – a conglomerate of sport shooting organizations including Taber Pistol and Revolver club, Taber Fish and Game Association, Vauxhall Fish and Game Association, Taber Archery, Trap and Skeet, Action Shooting, International Practical Shooting and a representative of the M.D. of Taber Council.

Since the M.D. of Taber Shooting Complex has been completed the Taber Shooting Foundation has worked diligently improving the shooting range by constructing all-weather shooting shelters on the 50m, 100m, 200m and 600m ranges, have

constructed a washroom facility, a machine storage shed and have undertaken considerable improvements to the training / meeting facility at the range.

Membership in the Taber Shooting Foundation is nearing 500 members and the range has been extensively used by not only the members but also youth groups, hunter training and law enforcement including the RCMP, CP rail police, Conservation Officers and other police agencies.

The TSF has hosted local, regional and provincial sport shooting events and recently hosted the small bore and archery events of the Southern Alberta Summer Games. Regular events and tournaments occur frequently at the range with notable upcoming events including lever action shoots, long range silhouette shooting, International Practical Shooting competitions and a recent 'ladies night' which was attended by 125 local ladies interested in the shooting sports.



Some of the ladies in attendance at the recent 'ladies night' event hosted by the Taber Shooting Foundation - July 2018

The M.D. of Taber Sport Shooting Complex is gaining a reputation as one of the premier shooting facilities in not only Alberta but indeed in Canada.

A great project undertaken by the M.D. of Taber which is providing another link in the economic development chain of our region.

*Left: Action Shooting Range
Right: 600m range*





Jim Willett, Village of Coutts councillor and Deputy Mayor, elected as new chairperson for SouthGrow

At the 2018 June Annual General Meeting,



SouthGrow members

voted on and passed a new restructuring of the organization. The new executive consists of 5 members, and as well there will be quarterly general meetings throughout the year which will call for attendance from representatives of all the member communities. It was felt that this would further engage all of the SouthGrow communities and give them a strong voice to help guide the direction of the organization.

SouthGrow is one of several Regional Economic Development Alliances (REDAs) in Alberta, with 24 communities and municipalities in its membership. Each REDA is non-profit, made up of communities who have joined together to foster business development and collaborate on economic initiatives that would otherwise not be achievable for an individual community. SouthGrow has completed studies on important issues which are current topics of interest to the MD of Taber such as water allocation and availability, alternate energy, broadband infrastructure for rural areas, and investment readiness and attraction. SouthGrow holds an annual economic summit, and has brought in events where speakers such as Doug Griffiths, former Minister of Municipal Affairs and author of "13 Ways to Kill Your Community" talk on hot topic issues.

Peter Casurella will remain as the Executive Director.



TABER IRRIGATION DISTRICT
Responsible Water Management

Taber Irrigation District Update

Update on Water Supply

River flows have diminished resulting in significant draws on the Alberta Environment and Parks (AEP) headworks system. Waterton Reservoir in late July was full and volume is being moved across to reduce the drawdown rate on St. Mary Reservoir, which was sitting at about 75% full. AEP is planning to complete repairs in the low level outlet and will try to meet downstream river flows over the spillway as long as possible to reduce pumping costs. You may recall St. Mary Reservoir was emptied in 2000 to complete repairs, resulting in reduced storage and contributing to rationing in 2001. To avoid this, AEP has hired a consultant to use an isolation barrier to seal the low level outlet, allowing repairs without loss of storage volume. The target is for this to be completed in August, but start-up delays may extend this date or postpone work to 2019. Milk River Ridge Reservoir was at normal summer levels of about 95% full. SMRID's Chin Reservoir has been drawn down along the lower curve to help keep water higher in the system. The level will be restored in September and October from AEP headworks reservoirs.

Following a cool, wet spring we are seeing similar water use to last year – just a little later. We passed peak irrigation demand the second week of July. As of July 22nd, TID ordered 61,000 ac-ft of water representing just under 40% of our licensed volume. This translates to about 8.7 gross inches per assessed acre (including municipal and other water use). Our annual allocation remains 16" per acre. Updates on allocation will be posted to our website.

Projects

By all accounts the gabion fences and debris booms off Taber Reservoir serving Big Bend Main, Lateral M and Taber Lake Lateral have significantly reduced weed and algae loading. TID ditchriders have been able to manage flows better, Magnacide H treatments have been more effective, and most importantly our water users off these systems have noticed their systems are running cleaner. Concepts are already being developed for other areas, with the Fincastle Reservoir outlet being the highest priority.

Filling Gabion Baskets for Infiltration System in TID



Various projects associated with the planned pipeline extending the East Horsefly Main Pipeline upstream are being planned. Some of the automation, gates and controls will be in place this fall, with other works coordinated for the pipeline commissioning in Spring 2020.

TID Gabion Wall Infiltration System Program

TID is planning to install more gabion wall infiltration systems for some of our pipelines in the upcoming construction season and is offering to include private systems in the tender. If you have a turnout directly off a TID canal and are experiencing downtime and excess maintenance in cleaning your pressure filter or sprinkler heads, a gabion wall infiltration system installed within the TID canal may be an effective low-maintenance solution. You would cover the cost and TID will administer the project. Contact District Engineer Tony Wikkerink at our office (403-223-2148) ASAP, to set up an assessment.

Disaster Recovery Program

TID has submitted our application for disaster recovery assistance to the Alberta Emergency Management Agency in an effort to cover approximately \$500,000 in emergency response and repair costs associated with the overland flooding event this Spring. We are awaiting a decision from the Disaster Recovery Committee, who in turn needs approval from Cabinet.

Crop Debris and Driving Bank Reminders

As you start harvest remember that you are responsible for any costs to TID associated with cleaning crop debris from our canals. Please keep both your soil and your crop residue from blowing into our works.

Canal driving banks are TID property and are available for irrigators to use to access your turnout. Please remember to use your M.D. of Taber approach and avoid hauling on our driving banks. Any damages will be repaired at your cost.

Wishing you a great harvest!

Taber Irrigation District: 403-223-2148;
www.taberirrigationdistrict.ca



Applicant # _____

HELP International SHELTERBELT TREE PROGRAM

For 2018 Fall Planting (Tree Order Form)



Applicant Information

Applicant Name(s)			Home Phone	
Street and/or Postal Box Address			Cell Phone	
City	Province	Postal Code	Email Address	
RM/District/County	Comments		Date of Application:	

1. Trees order will be filled on a first come first serve basis. There are 600,000 superior container rooted seedlings created at HELP for delivery. We do not anticipate any shortages.
2. 5% free bonus (Golden or Shrub Willow choice) if trees are picked up at HELP's Tree Farm in Weyburn SK.
3. Shipping is payable by customer at 25¢ per seedling (minimum \$40 charge).
4. For more application forms, catalogue photos and online purchase please go to website www.help-shelterbelts.com
5. No Minimum Land Ownership Requirement.
6. Any landowner, small town, school, conservation group or tree nursery is eligible to apply.
7. Tree orders must be interval of 10 i.e: 10, 20, 30 etc. Minimum global tree order is 50 trees.
8. 5% July Sales; 4% August Sales.

Payment Options (check off only one of following choices & circle sub-options that apply)

Payment by: Cheque Credit Card (circle one) If by cheque please enclose cheque with application form.
 If by Credit Card (not using on-line electronic shopping basket) please provide credit card information to effect payment:
 Card # _____ Full Name on Credit Card: _____
 Credit Card Expiry Date: _____ 3 Digit Credit Card Security Code: _____

Shipping Option

- HELP will call customers with pick up locations in your province prior to delivery. Please indicate your shipping option below: Check one option!
- Uber - HELP pays existing customer delivers trees to shipping customers for hand over at a mutual agreeable location within 50 km of destination
 - Loomis: to any residential or business address Loomis can deliver to.
 - HELP delivery when convenient.
 - Pick my trees up at HELP's Weyburn Shelterbelt Center Tree Farm at any day and time by prior appointment.

Customer Assistance

- Please contact me to discuss forestry design (or \$300 for on-site forestry design service plus milage)
- I wish a quote for HELP contract planting including equipment, trees and materials and assisting with planting, plastic mulching, grassing
- I really want to plant trees but don't know where to start. Please go to HELP website and click on planting and mulching instructions, shelterbelt design examples, and frequently asked questions.

Applicant's signature: _____ Date: _____
 For assistance in completing this application please call 306-842-2433 (Office hour: at customer convenience, Mon - Sat)
 Or email helpint@sasktel.net
 Please Fax or Email your signed application to:
 HELP International Shelterbelt Program
 Fax: 1(306) 848-0902 Or Mail (only if you have no fax or scanner/email) to: P.O. Box 181, Weyburn, SK. S4H 2J9

Quantity of trees required order summary

Regular size seedlings

Order of 300 trees or over: _____ x \$1.50 =
\$ _____

Order of under 300 trees: _____ x \$2.50=
\$ _____

Additional Purchases

Rolls of 2.3mil plastic mulch (4ft x 1500ft):

_____ 70 lb. Rolls x \$175 ea = \$ _____

_____ 78 lb Rolls 2.8 ml @ \$200 ea = \$ _____

10mil Plastic Mulch Pads for single trees (2ft x 2ft)

_____ Mulch Pads x \$2.50 ea = \$ _____

Sub-Total: \$ _____

Discount: \$- _____
(5% July Sales; 4% August Sales)

New Sub-total: \$ _____

Shipping: _____ Regular trees @ 25 cents = \$ _____

_____ Xtra large trees @ 25 cents =
\$ _____

_____ Rolls Mulch x \$30 = \$ _____

(min shipping charge for tree order 1-160 trees is \$40)

Weyburn Pick Up (no shipping charge only packaging cost)

_____ Trees @ 2.5 cents = \$ _____
(packaging cost if weyburn pick-up)

New Sub-total: \$ _____

GST 5%: \$ _____

SK PST 6%: \$ _____
(SK Residents Only)

GRAND TOTAL TO PAY: \$ _____

"Special Notice: If all the trees you order total less than 50 trees HELP cannot process your order. HELP has made a promise to private nursery industry that orders under 50 trees shall not be considered for HELP's Shelterbelt Program"

See actual photos and size of seeding in 'catalogue' on HELP website: www.help-shelterbelts.com

Tree Variety	Average Regular Size	Quantity of Regular Size	Average Extra Large Size	Quantity of Extra Large
HYBRID POPLAR				
Mixed Poplar	10-16 in			
Prairie Sky Poplar	10-16 in		N/A	
Okanese	10-16 in			
Walker	10-16 in			
Red Ozier Dogwood	10-16 in			
Velosa Lilac	10-18 in			
Sherbert Chokecherry	10-18 in			
WILLOWS				
Pussy Willow	OUT OF STOCK			
Golden Willow	10-16 in		N/A	
Acute Willow	10-16 in			
Laurel Willow	10-16 in			
Cluster Shrub Willow	12-16 in			
White Willow	15-20 in			
Mixed Willow	16-24 in			
Sandbar Willow				
Large Mixed Willow				
EVERGREENS				
White Spruce			N/A	
Blue Spruce	Out of stock			
Scot's Pine				
TOTAL QTY OF TREES				

BRIDGES

By Karen Ingram
*Taber Irrigation
 Impact Museum*

A desert, hell, a forbidding and arid region, ill suited for civilization, a region of short grasses and desert like conditions where cacti grow along the coulee ridge. These were all terms used by Captain John Palliser when he reached the Canadian Prairies during an expedition from 1857 to 1960. The land that would be Palliser's Triangle covered most of Southern Manitoba, Saskatchewan and Alberta.

The M.D. of Taber takes in 975,000 acres of this land that was described so harshly. Today some of the descriptions for this land would be rich, fertile land, a garden of Eden with strong agricultural based communities. What is the difference? Irrigation.

"The MD operates 170 local road bridges in the MD of Taber valued at over 100 million dollars. Most cross irrigation canals and ditches." Quote from Derrick Krizsan. Most of these bridges were built by the MD or contractors under the direction of the MD. The bridge I want to give you a look at how ever crosses the Old Man River built and operated by Alberta Transportation within the Government of Alberta. That would be the Archie McLean bridge that crosses the river on hwy 864.

By 1908 there was a population of 2,200 in Taber, much of the land north of the river was settled and being farmed. The only way to cross the river was by ferry, unreliable for most of the year. "The bridge across the Belly River is the all important matter to



Archie J, McLean

Taber at present, and for the settlers north of the river it is an absolute necessity. Every day they have to risk their lives and the lives of their horses in coming to town, and in the fall when they are marketing their grain they are compelled to drive many miles out of their way simply for the want of this bridge." *Taber Times* of March 19, 1908. "Heavy rains have caused the Belly River to rise very rapidly. The current was so strong that the ferry could not run yesterday morning.

Several of the settlers from north of the river, who came into town Tuesday, could not return and had to drive clear to Lethbridge in order to get home. What stronger proof of the necessity of the bridge could be found than this?" *Taber Times* of June 4, 1908.

In March of 1909, Taber area farmer from north of the river, Archie McLean, ran for and won a seat in the Alberta Legislature. In the *Taber Times* of December 2, 1909 we saw "The New Bridge over the Belly River at Taber, has been open to traffic for nearly a week." Archie McLean was credited with using his new found influence to get the bridge built. The Bridge was named after him.

Twenty years later in January of 1930 we read that the bridge was in a state of disrepair, "The McLean Bridge over the river just north of Taber has shown many signs of need of renewing timbers." The article stated that it was likely all wooden surfaces on



McLean Bridge - Built in 1910

the bridge would be replaced by new timbers, "making a clean sweep of everything except the concrete and steel sections of the structure."

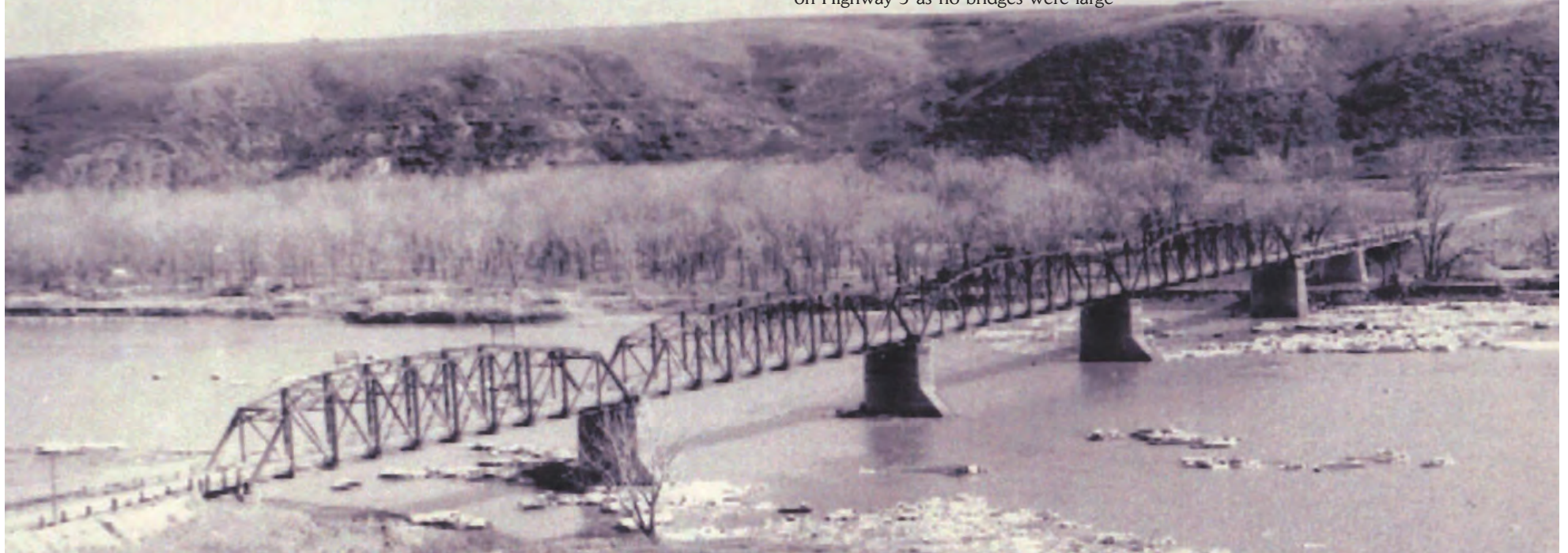
In October of 1987, an oil tanker left the road and exploded on the north approach to the bridge. The "fierce blaze" started the bridge on fire. The Municipal District of Taber called for the narrow one lane bridge to be replaced rather than just repaired at this time. This was not to be, the bridge deck was repaired and reopened to all traffic in mid December.

In early 2000 thanks to lobbying by the M.D. of Taber funding was provided by the Province of Alberta to replace the one lane bridge with a concrete span bridge. The use of 'post tension' bridge construction was a new engineering technique and the Archie McLean bridge was one of the first bridges constructed using this new construction practice. The girders were so large that they had to be transported from Calgary where they were poured to Medicine Hat down Highway 1 and back to the construction site on Highway 3 as no bridges were large

enough on a direct route from Calgary to Taber due to their weight.

In order to complete the new bridge the M.D. of Taber acquired the M.D. of Taber Municipal Park (formerly the Provincial Park) from the Province as additional land was required for the construction and new roadway.

August 30, 2000 a Sod Turning ceremony was held to celebrate the construction of a New McLean Bridge. Representatives from the construction company, M.D. Council and the Alberta Government were present for this. Traffic was not inconvenienced as the new bridge was built prior to the old being torn down. The approach to the bridge was made easier to navigate and the new bridge was now able to handle two lanes of traffic, ninety years after the original was built. The bridge was opened to traffic on October 26, 2001 with an official ribbon cutting ceremony on Thursday, November 8, 2001. We said goodbye to the original Archie McLean Bridge in January of 2002 when it was torn down.





Celebrating the opening of Station 7, Taber Regional Fire Station

The Grand Opening of Station 7 MD of Taber Regional Fire Station occurred on the evening of July 19 with 460 citizens of the Village of Barnwell and the M.D. of Taber in attendance.

We were honored to host the Village of Barnwell Mayor and Council, the M.D. of Taber Reeve and Council, Member of Parliament Mr. Martin Shields, Mr. Dean Clark of the Office of the Fire Commissioner and 460 of the citizens Station 4 and 7 of the MD of Taber Regional Fire Service serve and protect each day.

Thank you to the Village of Barnwell Council and Staff for the meal that they provided to those in attendance and their efforts in prepar-

ing for this great event.

Thanks to the M.D. of Taber Deputy Regional Fire Chief Bruyere for being the Master of Ceremonies.

A special thank you to the 32 M.D. of Taber Regional Fire Service members who attended the event representing the 6 Regional Fire Stations in the M.D. of Taber Regional Fire Service.

The Village of Barnwell undertook and completed the construction of the Barnwell Fire Station as part of the MD of Taber / Village of Barnwell Fire Partnership with the MD of Taber providing the fire equipment. The two communities share the cost of the volunteer firefighters and operating costs for the fire station. The fire



Station provides service to the M.D. of Taber and the Village of Barnwell under the leadership of Deputy Regional Fire Chief Bruyere.

Station 7 (Barnwell) is part of the MD of Taber Regional Fire Service which provides fire and rescue services to the Village of Barnwell, the Town of Vauxhall and the M.D. of Taber. The Regional Fire Services has a current compliment of 117 volunteer firefighters with a goal of reaching 125 volunteer firefighters this year.

The firefighters are trained to a professional firefighter standard.

We are very fortunate as a community to have citizen volunteers who live throughout the M.D. of Taber and who provide their time to us providing an unmatched combination of dedication, service and skill at a value which is affordable for our community.

It was a great afternoon and evening to celebrate the opening of Station 7.



Taber Ag Plex *Calendar of Events*

- **Farmers markets on Thursday's from 5-7 PM**
- **All Girls Rodeo Finals: August 17-19**
- **Cornfest Bull-A-Rama: August 24 Doors open at 6, rides begin at 7. Free Admission!**

Cancellation of Strychnine Registration

Strychnine was recently re-evaluated as part of the Pest Management Regulatory Agency's (PMRA) re-evaluation program. Health Canada is proposing to cancel the registration of 2% Liquid Strychnine due to environmental concerns identified during the review. This review can be found PMRA's website at <https://www.canada.ca/en/health-canada/services/consumer-productsafety/pesticides-pest-management/public-consultations/proposed-re-evaluation-decisions/2018/strychnine.html>

Strychnine is a valuable tool for many producers in the province and especially in Southern Alberta where the gophers have the ability to eat crops at an alarming rate in the spring time.

As a local government the MD of Taber. We are doing everything we can to help keep Strychnine in our producer's tool box. We would encourage you to help us in this matter by contacting your local MLA's and MP's and let them know how important Strychnine is to you and or the area.

Vauxhall and District CHAMBER OF COMMERCE

The new Vauxhall and District Chamber of Commerce is ready to serve businesses in the M.D. of Taber!

The boundaries for the new chamber includes the Town of Vauxhall, adjoining territory, north and north-east of Newell boundaries, east to Cypress Country boundaries, south to Highway 521 and Highway 875, west to Country of Lethbridge boundaries and west and north to County of Vulcan boundaries.

The new Chamber offers opportunities for local businesses including Group health plans which are a very valuable option for smaller businesses and farms.

A recent Taber Times news article indicates that the Vauxhall and District Chamber of Commerce has a list of things they want to put their focus towards including aboriginal relations, agriculture and forestry, culture and tourism, economic development and trade, education, energy, environment and parks, finance and treasury board, health, innovation and advanced education, jobs, skills, training, labour, municipal affairs, transportation but they know it's unrealistic to take it all on at once.

Look for more from the Vauxhall and District Chamber of Commerce in the coming months!

Contacts:

Joerg Klempnauer, President joerg@columbiaseed.ca 1-403-330-5480

Samantha Broderson, Vice President samantha@havenagencies.ca 1-403-654-2331

Peter Van Uden, Secretary, peter@havenagencies.ca 1-403-654-2331

Jennifer Schaefer, Treasurer, jennifer.schafer@availcpa.com 1-403-654-4060

Learner Support Services

The Community Adult Learning Program assists individuals to help them meet their learning goals or access other programs and services.

Did you know Taber and District Community Adult Learning can connect you with: College Connections – information or assistance with learning opportunities, post-secondary, funding options or education planning.

Assistance or referrals to community supports and services such as career counselling, employment services, day home providers or other government programs and services.

One-on-One computer Coaching – need help with your computer, smart phone or tablet? Email? Microsoft Office? Your questions answered!

Onsite computer and internet access for learners

Exam Proctoring (\$35.00)
Need support, guidance or encouragement for self-directed or online learning?

If you need help, connections to your next step or a knowledgeable referral, we are the place to start!



CAREER AND EMPLOYMENT SERVICES

**We're here to connect you
with your next job!**

Career and Employment Services provides employment related services and support to individuals to help them find and maintain employment.

FREE Employment Services

- Resume Development ■ Job Search Assistance
- Job Placement Services ■ Assistance with Job Applications
- Interview Preparation ■ Computer Training

5011 - 49 Avenue, Taber • 403-223-1169

Funded by the Government of Alberta



CALL 403-223-1169 FOR AN APPOINTMENT

Your Door *to the*
FUTURE

Learn English skills to help you find a job

Work Foundations Program

Work Foundations is an 18 week, full-time basic skills program that helps you learn reading, writing, numeracy and digital skills for employment.

November 5, 2018 to March 21, 2019
8:15 a.m. to 4:00 p.m.

Christmas Holidays: December 6, 2018 to January 6, 2019

Requirements:

- Low income learners
- Must be at least 18 years of age
- Must have low literacy skills
- Must be work place destined
- Must be unemployed by start date



Clients that are eligible for employment insurance (EI) funding will be able to collect EI while attending the program.

Must apply by September 17, 2018. Seats are limited.

For more information please call: 403-223-1169



Support for this program is provided by the Government of Alberta - Advanced Education



5011-49 Ave.,
Taber
403-223-1169

NOW ACCEPTING APPLICATIONS!

Are you facing obstacles to employment and/or Post-Secondary Education?

The Taber Youth Employment Program assists youth with developing employment skills and gaining practical on-the-job work experience



UPCOMING START DATES
AUG. 13 / DEC. 3 / APR. 1 / JULY 22

← Apply online today!



ELIGIBILITY:

- Ages 15-30 and not in school
- Work in Canada legally
- Not receiving E.I. benefits
- Unemployed
- Have barriers to employment

Contact:
P: 403-416-5115



Funded by the Government of Canada's Skills Link program



The Taber Youth Employment Program is a project of Taber & District Community Adult Learning Association



Taber Youth Employment Program

FALL CLASS!

Now accepting applications for the next class starting
December 3, 2018

Eligibility Requirements:

- applicant is 15 to 30 years old and not in school
- applicant is legally able to work in Canada
- applicant is not currently receiving E.I. benefits and is presently unemployed
- applicant has barriers to finding or maintaining employment

Learn more and apply online at
[facebook.com/TaberYEP](https://www.facebook.com/TaberYEP) or call 403-416-5115



Use your smartphone to SCAN the CODES to access the Taber Youth Employment Program online application and our Facebook page!



The Taber Youth Employment Program (YEP) is a project under the Taber & District Community Adult Learning Association (TDCALA).

FUNDED BY THE GOVERNMENT OF CANADA'S SKILLS LINK PROGRAM



FAMILIES LEARNING TOGETHER

ENGLISCH LERNEN / ENGLISCH SPRACHSCHULE FÜR FRAUEN UND KLEINE KINDER



Families Learning Together reaches English reading, writing, listening and speaking, as well as digital literacy skills. Child care is provided for children 12 months to kindergarten.



October 9 to December 13, 2018
January 15 to March 21, 2019

\$40 EACH SESSION OR \$75 FOR BOTH

TABER

Monday, Tuesday and Wednesday
8:30 a.m. - 12 p.m.
at Taber Christian School
Adults and children (*FREE CHILD CARE*)
Child care is provided for children
12 months to kindergarten.

TABER

Monday, Tuesday and Wednesday
8:30 a.m. - 12 p.m.,
at Taber Taber Provincial Building
ADULTS ONLY (NO CHILD CARE)

VAUXHALL

Tuesday, Wednesday and Thursday
8:30 a.m. - 12 p.m.,
Adults and children (*FREE CHILD CARE*)
Child care is provided for children
12 months to kindergarten.

GRASSY LAKE

Monday and Wednesday
8:30 a.m. - 12 p.m.,
Adults and children (*FREE CHILD CARE*)
Child care is provided for children
12 months to kindergarten.

Your future is calling



NOW IS THE TIME TO **Get your GED**

Funding provided for those who qualify

GED PREPARATION & EXAM

October 2, 2018 to December 18, 2018
Tuesday, Wednesday, Thursday ■ 5 p.m. to 8 p.m.
Location to be determined.

Included in the GED Preparation class is:

- 100 hours of GED Preparation instruction via videoconferencing. There will also be an in-house facilitator for support during the class.
- Books and calculator • GED exam fee

Students may qualify for Alberta Works Part-Time Studies grant to cover training and testing.

Fees for those who do not qualify for funding:

GED Prep Class \$250
GED Exam \$250

GED Exam

Dec. 19 and Dec. 20
8 a.m.

Taber Provincial Bldg.

GED PREP class

Not ready for the GED class?

We offer classes in Language Arts and Mathematics in preparation for the GED Class

Tuesdays, October 16 to December 4
6:00 to 8:00 p.m. ■ \$50.00

Students will need to purchase Steck-Vaughn Complete Canadian GED Preparation textbook and Casio FX-260 Solar Calculator - \$35.00
(Available to purchase at Taber Adult Learning office)

TO REGISTER OR FOR MORE INFORMATION:

Phone: 403-223-1169

OR IN PERSON:

**Drop by our office in the Provincial Building
(5011 - 49 Ave., Taber, AB)**



Are you new to Canada?

Are you new to this area?

Our goal is to eliminate barriers for newcomers to become employed, attend school, learn new skills and become part of the community.

TO BE ELIGIBLE FOR THE SERVICES LISTED YOU MUST HAVE ARRIVED IN CANADA WITHIN THE PAST 10 YEARS.

Our Newcomers Services

- Finding a job (employment opportunities)
- Learn English, speaking, reading, writing
- Transportation for job interviews or medical appointments, when critical.
- Community volunteer opportunities
- Driver's License Vocabulary Tutoring
- Low German Translating Services
- Information about area schools

Keep updated with our monthly newsletter informing you of activities and events within our communities.

Come meet other newcomers, potential employers and a variety of agencies at our bimonthly

MEET & GREET

September 26 and November 28

We have a Low-German translator available in our office. Please make an appointment to book a time with her.

Text us at 403-892-1603 for more information!

Class 5 and 7 Drivers Training

MONDAY - FRIDAY, SEPTEMBER 17-21
9 A.M. TO 12 P.M.

Become a Safe and Confident Driver

Canadian Road Rules ■ Canadian Driving Laws
Safe Driving Techniques ■ Defensive Driving
Financial assistance for Newcomers to Canada

CALL 403-892-1603 FOR MORE INFORMATION.

\$50 Per Person

Welcome to Taber and the M.D. of Taber



5011-49 Ave., Taber
Available 9 a.m. to 4 p.m., Monday to Friday

Phone: 403-223-1169

**TABER & DISTRICT COMMUNITY
ADULT LEARNING ASSOCIATION**



Funded by
the Government
of Alberta



WOMEN'S *Personal*

Improving your **BMW**

Best

Body ■ Mind
Wellness ■ Empowerment

Wednesdays, October 24 to November 21
9:00 a.m. to 12 noon, Boardroom, Taber Provincial Building

We are excited to have Freddi Dogterom BHHS, CCDP, PRP, RRC a Career Development and Personality Training expert as our instructor.

A world class trainer and professional speaker with over 35 years experience helping people to build themselves to success.

OCTOBER 24

TRUE COLORS

'From Furious to Curious'

- Understand your own strengths and needs
- Appreciate the differences in others
- Learn to relate and build relationships with others.

NOVEMBER 14

JUST A JOB OR FULFILLING CAREER?

"Finding your Perfect Career Path"

- Discover your dependable strengths
- Find your preferred future
- Plan your path to success

OCTOBER 31

COMMUNICATING WITH CONFIDENCE

"The Secret Recipe to successful conversations"

- Learn the simple 3 ingredient recipe to communication success
- Develop confidence in your communication skills
- Build employment skills.

NOVEMBER 21

PUT POWER IN YOUR PURSE

"Becoming Financially Fit"

- Discover how a budget can set you free
- Learn how to make life rich with a small budget
- Make a financial plan that works for YOU!

NOVEMBER 7

FEELING GOOD, LOOKING GREAT

"Health and Wellness a Nutritional Approach"

- Learn the nutritional elements of great health
- Learn to be "Healthy Thin and Free"
- 1, 2, 3 steps to feeling great.

\$50.00
for all
5 classes

FREE Child Care
will be provided
for children
1 year to
Kindergarten.



Everyone wants to be in a class given by
"THE FREDDI"

She brings energy, fun, magic and passion as she leads participants to discover themselves, their joys, and their path to success.

She has degrees in Holistic Health Science and Adult Education and earned credentials in Career Development and Retirement Life Planning.

Freddi is one of 12 women in the WORLD to have achieved the top professionals speaking designation of Accredited Speaker.

Come to her sessions - you need to be here!

TABER & DISTRICT
COMMUNITY ADULT
LEARNING
ASSOCIATION

COMMUNITY
LEARNING

To register or for more information phone 403-223-1169
OR IN PERSON: Drop by our office in the Provincial Building
(5011-49 Ave., Taber, AB)